

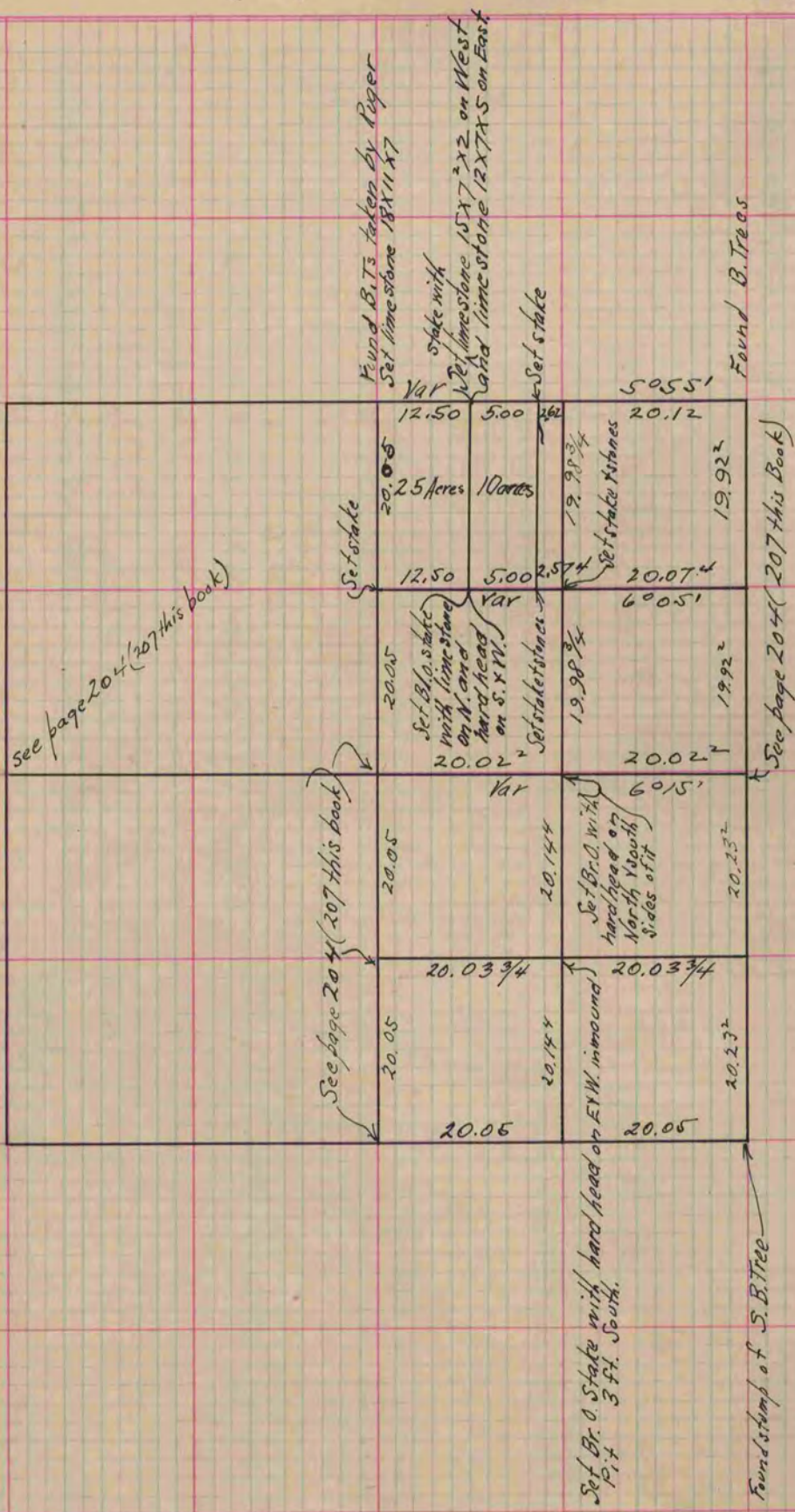
# MICROFILMED PLAT AND RECORD

Of a Survey on Section 11 T 1 R 13 E. of the 4 P. M. in Turtle Township  
Rock County, Wisconsin, made May the 29<sup>th</sup> 1865

I hereby certify that the following is a correct record of said survey as made by me.

COUNTY BUILDING  
CITY OF JANESVILLE

(Signed) S. D. Locke  
R. H. B. County Surveyor.



Copied from Page 220 Vol. 1. Original County Surveyors Record