

MICROFILMED

PLAT AND RECORD

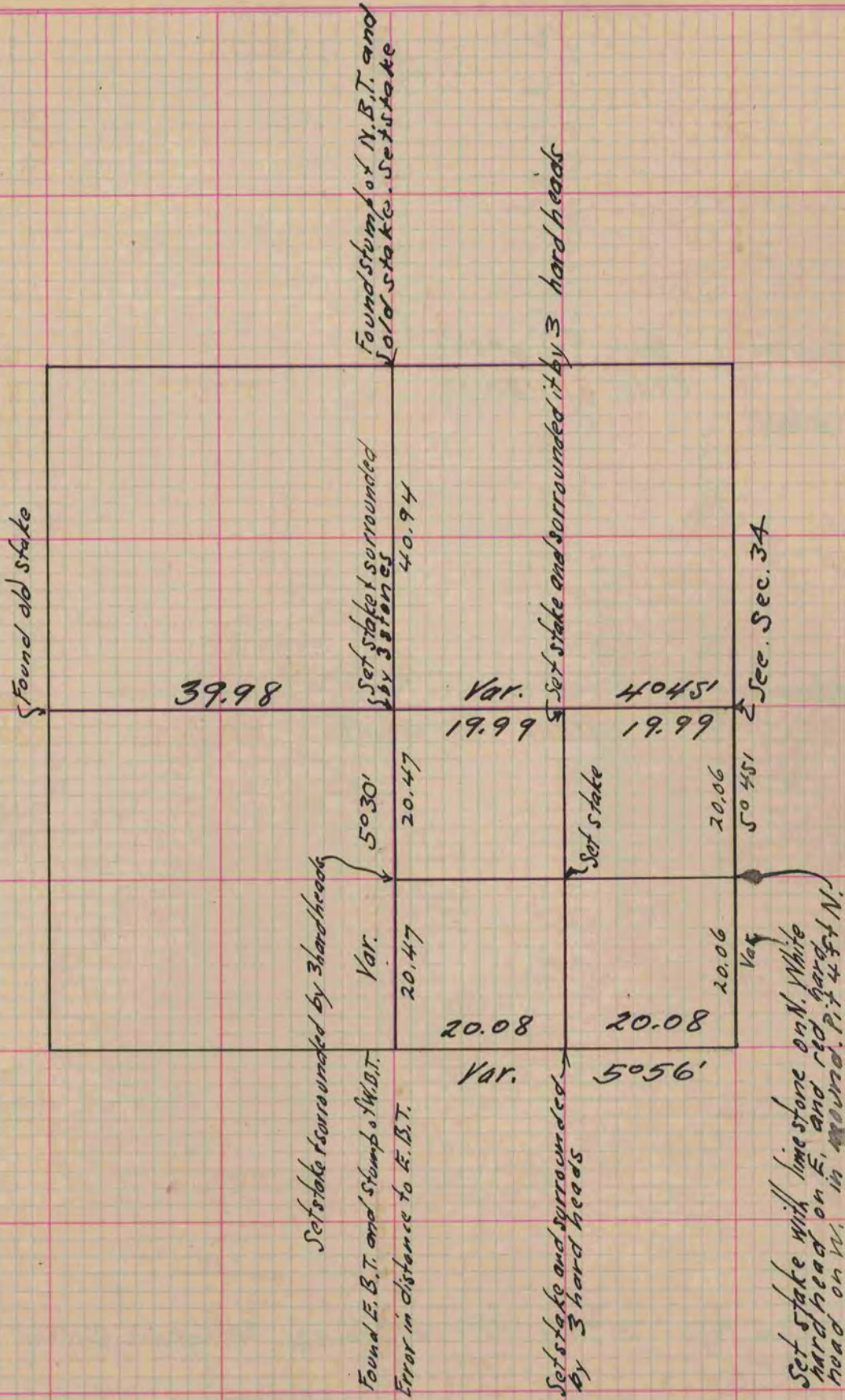
227
V-1

COUNTY BUILDING
CITY OF JANESVILLE

Of a Survey on Section 33 T 1 R 11 E. of the 4 P. M. in Newark Township
Rock County, Wisconsin, made April the 5th 1865

I hereby certify that the following is a correct record of said survey as made by me.

(Signed) S. D. Locke
R. H. B. County Surveyor.



Copied from Lower 1/2 of Page 214 Vol. 1. Original County Surveyors Record