

MICROFILMED

PLAT AND RECORD

225
V-1

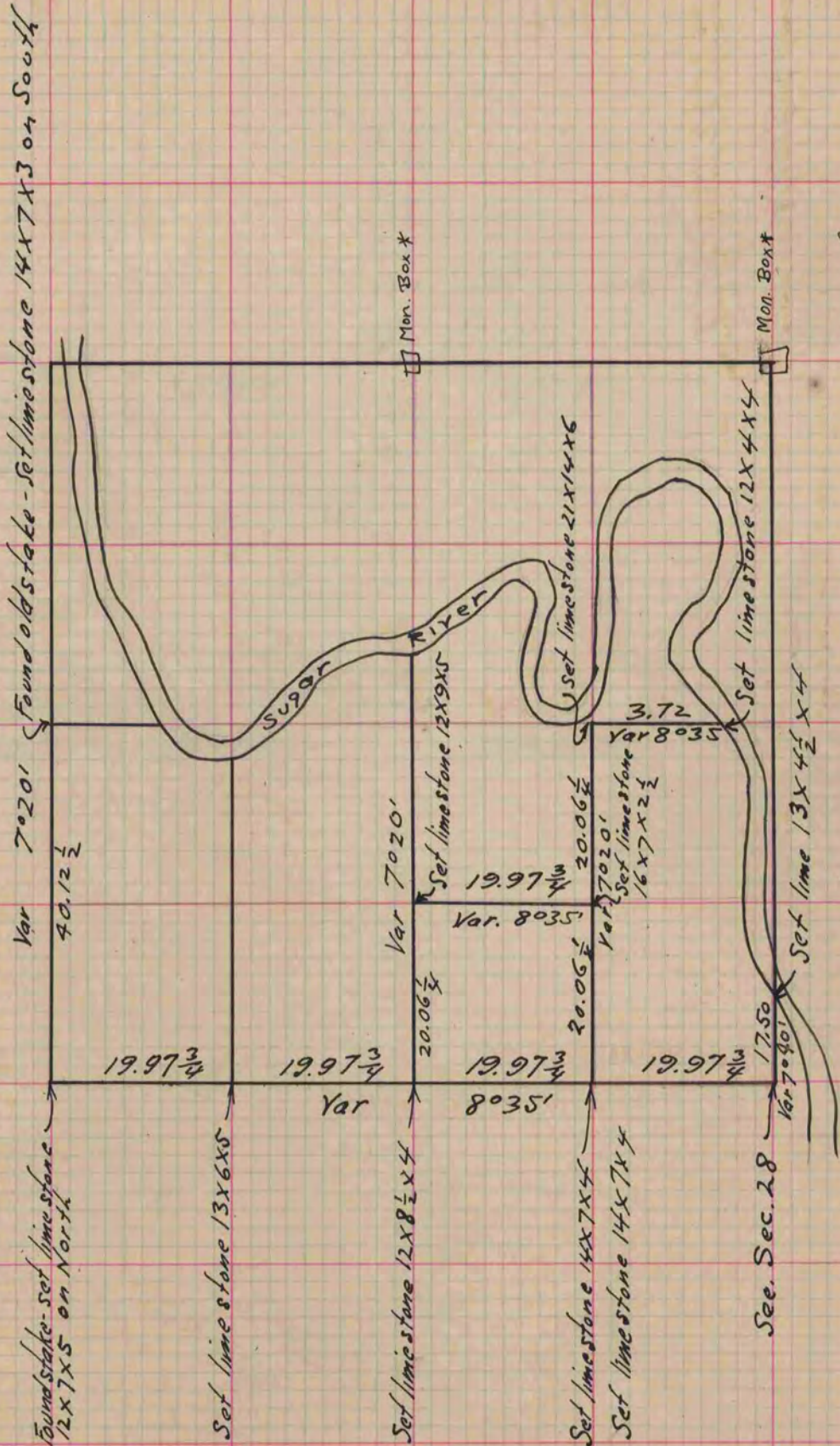
COUNTY BUILDING
CITY OF JAMESVILLE

Of a Survey on Section 20 T 1 R 10 E. of the 4 P. M. in Avon Township

Rock County, Wisconsin, made Dec. 7th the 1864

I hereby certify that the following is a correct record of said survey as made by me.

(Signed) S. D. Locke
R.H.B., County Surveyor.



* copied from
Beloit records
12/9/25 G.W.

N.B. Ran the E. line the same course as the W. line of Soc. 28, that being probably the way it was run by the Government Surveys. Ran the interior N.S. and E.W. lines the same course respectively as the West and South lines, the only known lines in the Fractional Sec. - S. D. Locke
R.H.B.

Copied from lower 1/2 of Page 213 Vol. 1. Original County Surveyors Record