

PLAT AND RECORD

MICROFILMED

Of a Survey on Section 25 T 4 R 12 E. of the 4 P. M. in Fulton Township

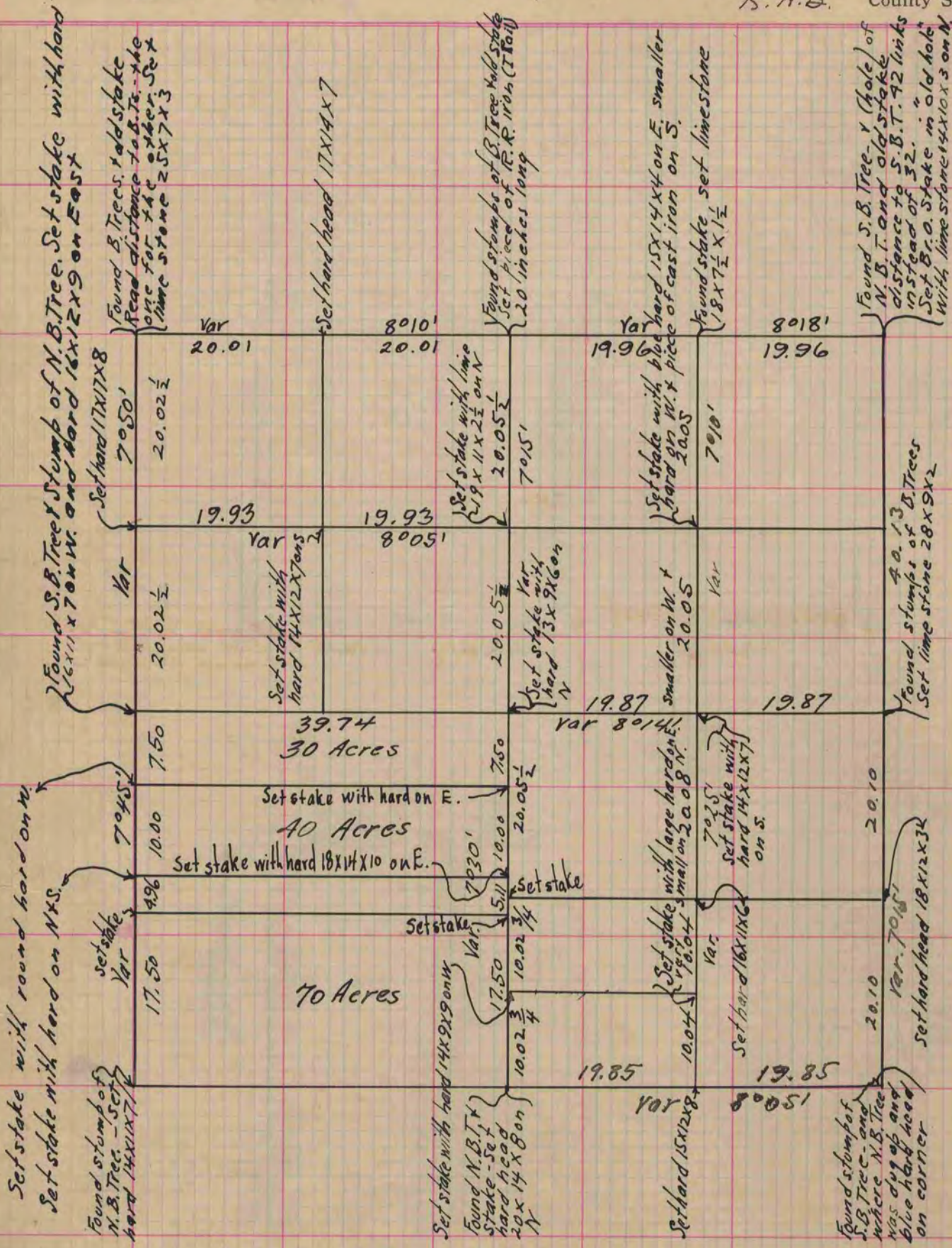
Rock County, Wisconsin, made October the 25, 26, 27 1864

I hereby certify that the following is a correct record of said survey as made by me.

COUNTY INCLUDING
CITY OF JANESVILLE

(Signed) S. D. Locke

R. A. B. County Surveyor.



Copied from page 210 Vol. 1. Original County Surveyors Record