

PLAT AND RECORD

MICROFILMED

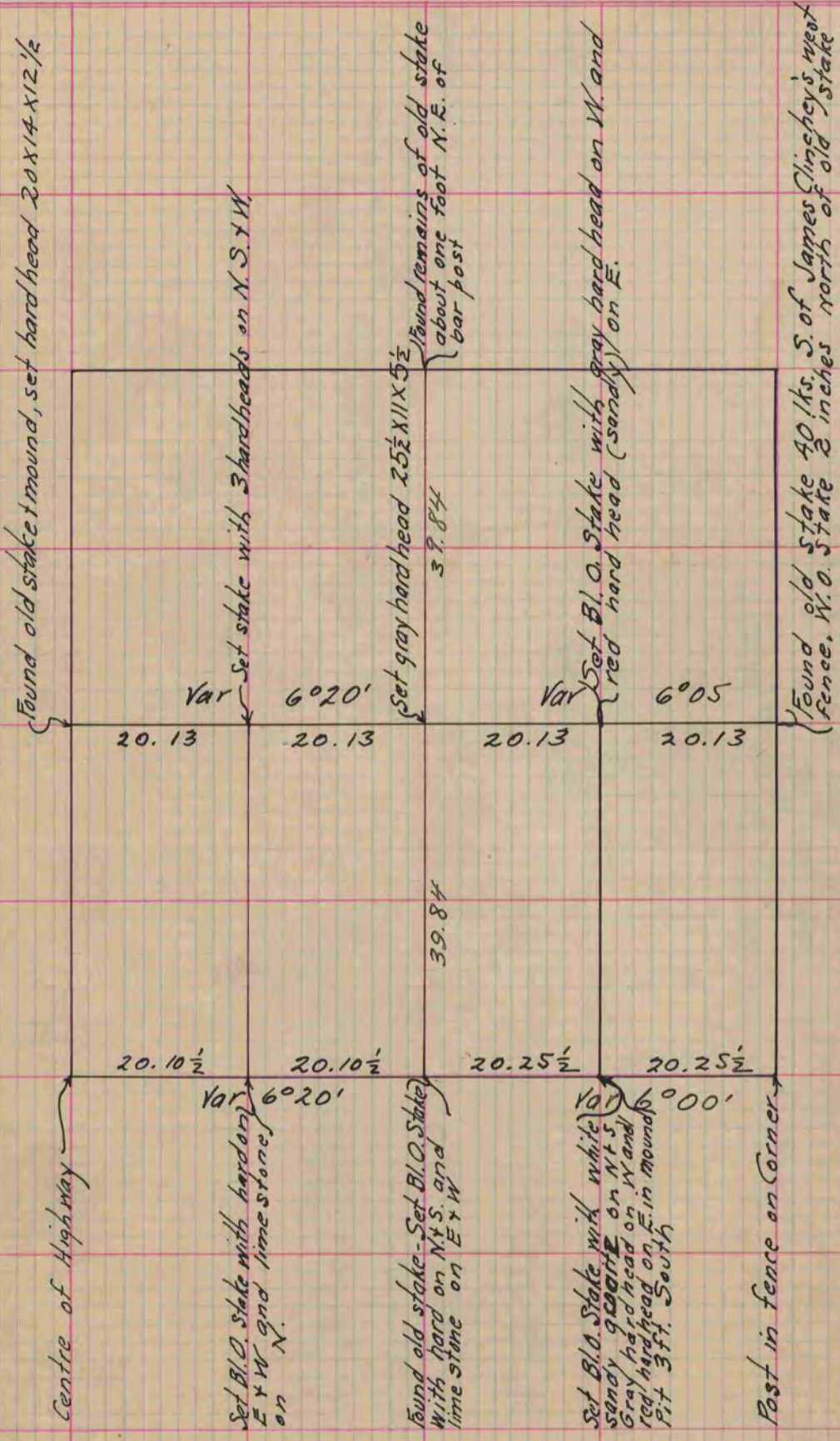
Of a Survey on Section 8 T 1 R 12 E. of the 4 P. M. in Beloit Township

Rock County, Wisconsin, made May the 27th 1864

County Building
CITY OF JANESVILLE
I hereby certify that the following is a correct record of said survey as made by me.

(Signed) S. D. Locke

R.H.D. County Surveyor.



Copied from Page 204 Vol. 1. Original County Surveyors Record