

# PLAT AND RECORD

205  
V-1

**MICROFILMED**

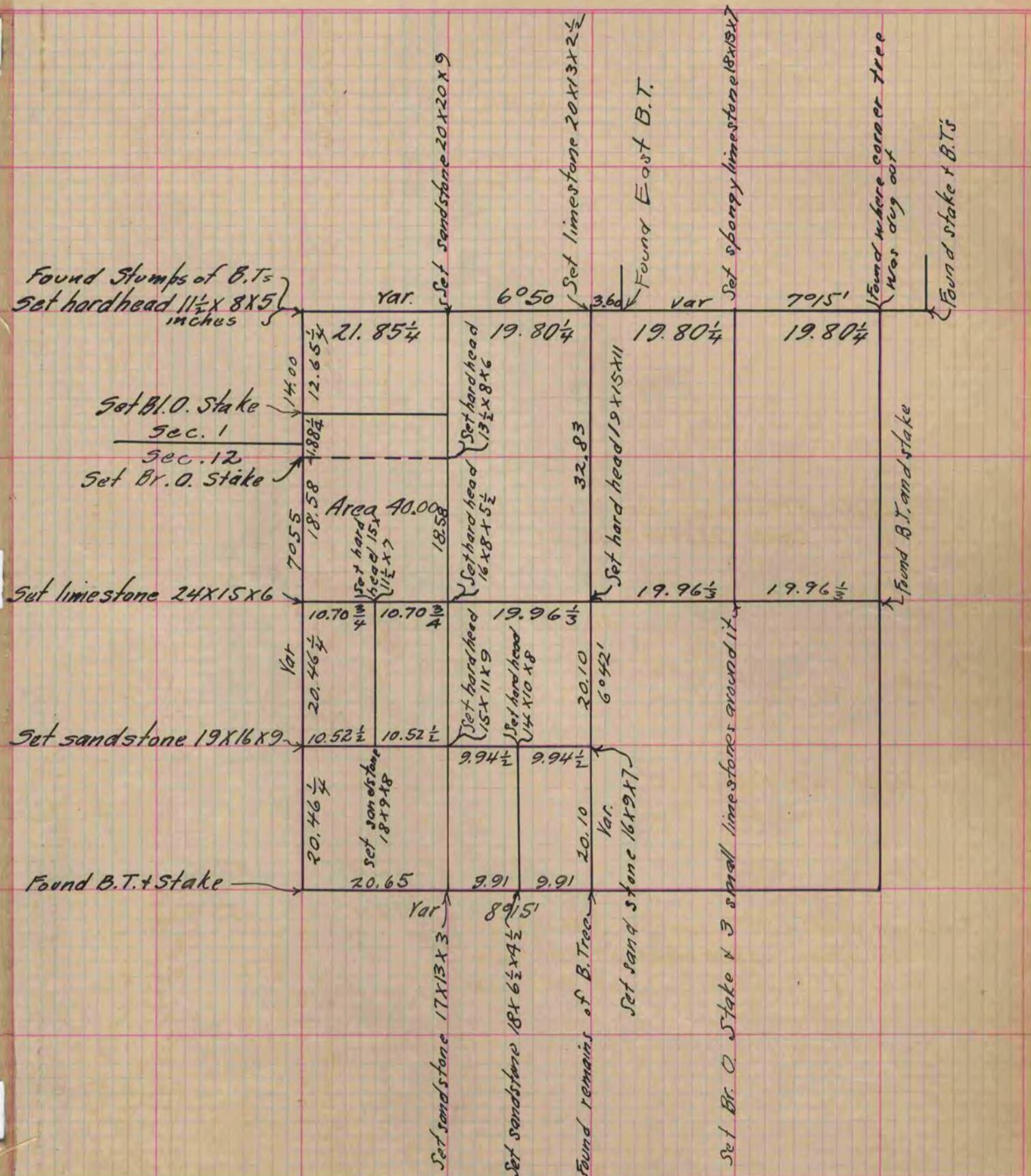
Of a Survey on Section 6 T 3 R 10 E. of the 4 P. M. in Magnolia Township

Rock County, Wisconsin, made April the 21<sup>st</sup> + 22<sup>nd</sup> 1864

I hereby certify that the following is a correct record of said survey as made by me.

COUNTY BUILDING  
CITY OF JANESVILLE

(Signed) Sylvanus D. Locke  
R.H.B. County Surveyor.



Copied from Upper  $\frac{1}{2}$  of Page 203 Vol. 1. Original County Surveyors Record