

PLAT AND RECORD

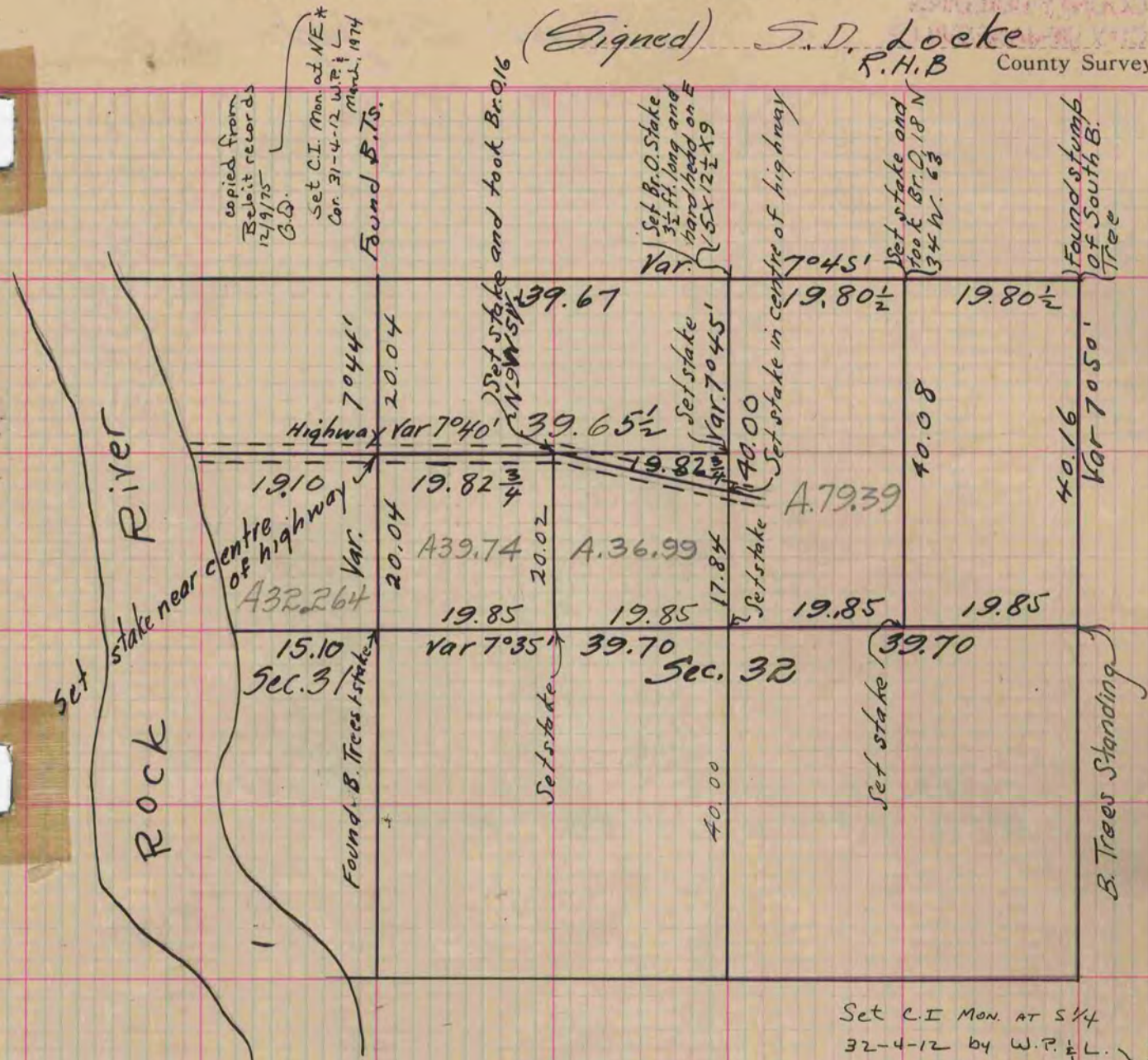
MICROFILMED

COUNTY BUILDING
CITY OF JANESVILLE

Of a Survey on Sections 31 + 32 T 4 R 12 E. of the 4 P. M. in Fulton Township
Rock County, Wisconsin, made February the 26th & 27 1864

I hereby certify that the following is a correct record of said survey as made by me.

(Signed) S.D. Locke
R.H.B County Surveyor.



Set C.I. Mon. at S 1/4
32-4-12 by W.P. & L.
March 1974. copied from
Bseit records
12/9/75 G.G.

Set C.I. Mon. at N 1/4
5-3-12 by W.P. & L.
March 1974.

Copied from Upper 1/2 of Page 201 Vol. One Original County Surveyors Record