

# PLAT AND RECORD

**MICROFILMED**

Of a Survey on Sections 26 + 35 T 2 R 12 E. of the 4 P. M. in Rocke Township

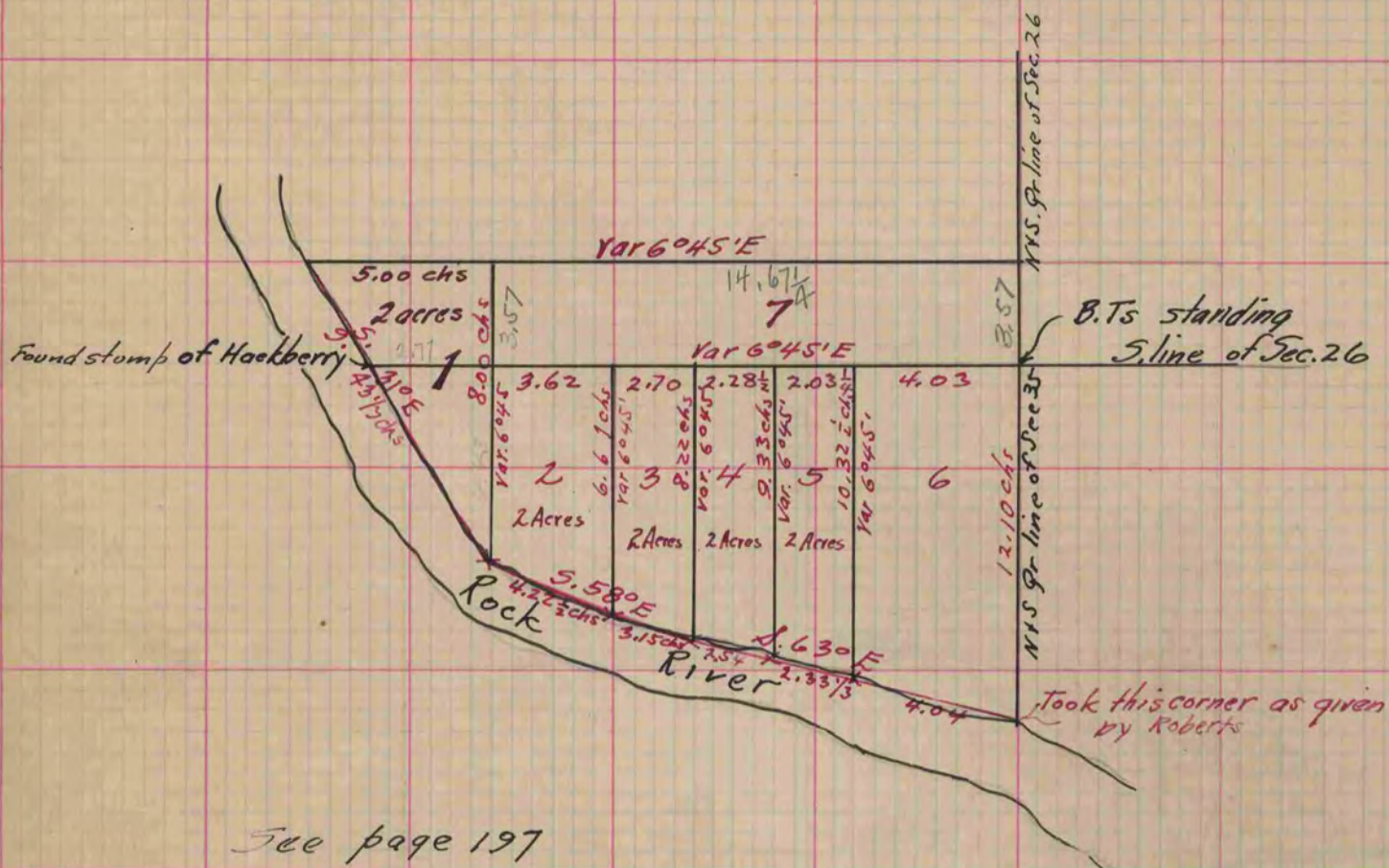
Rock County, Wisconsin, made January the 18 1864

I hereby certify that the following is a correct record of said survey as made by me.

COUNTY BUILDING  
CITY OF JANESVILLE

*(Signed)* S. D. Locke

County Surveyor.



See page 197

Copied from Lower 1/2 of Page 199 Vol. 1. Original County Surveys Record