

PLAT AND RECORD

MICROFILMED

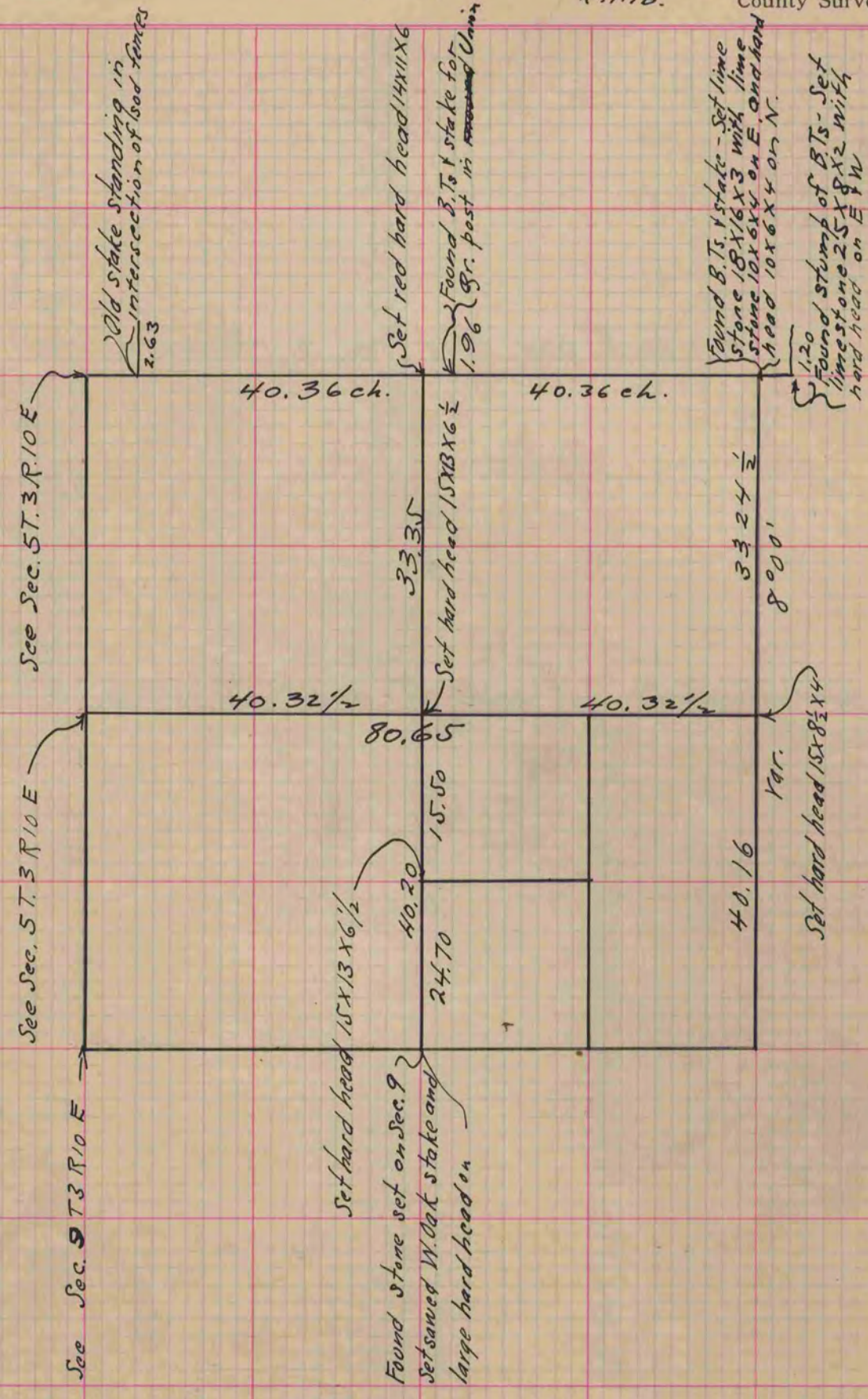
Of a Survey on Section 4 T 3 R 10 E. of the 4 P. M. in Magnolia Township
Rock County, Wisconsin, made Dec. 11th the 1863

I hereby certify that the following is a correct record of said survey as made by me.

COUNTY BUILDING
CITY OF JANESVILLE

(Signed) J. D. Locke
R.H.B.

County Surveyor.



Copied from lower 1/2 of Page 198 Vol. 1. Original County Surveyors Record