

V-1 MICROFILMED

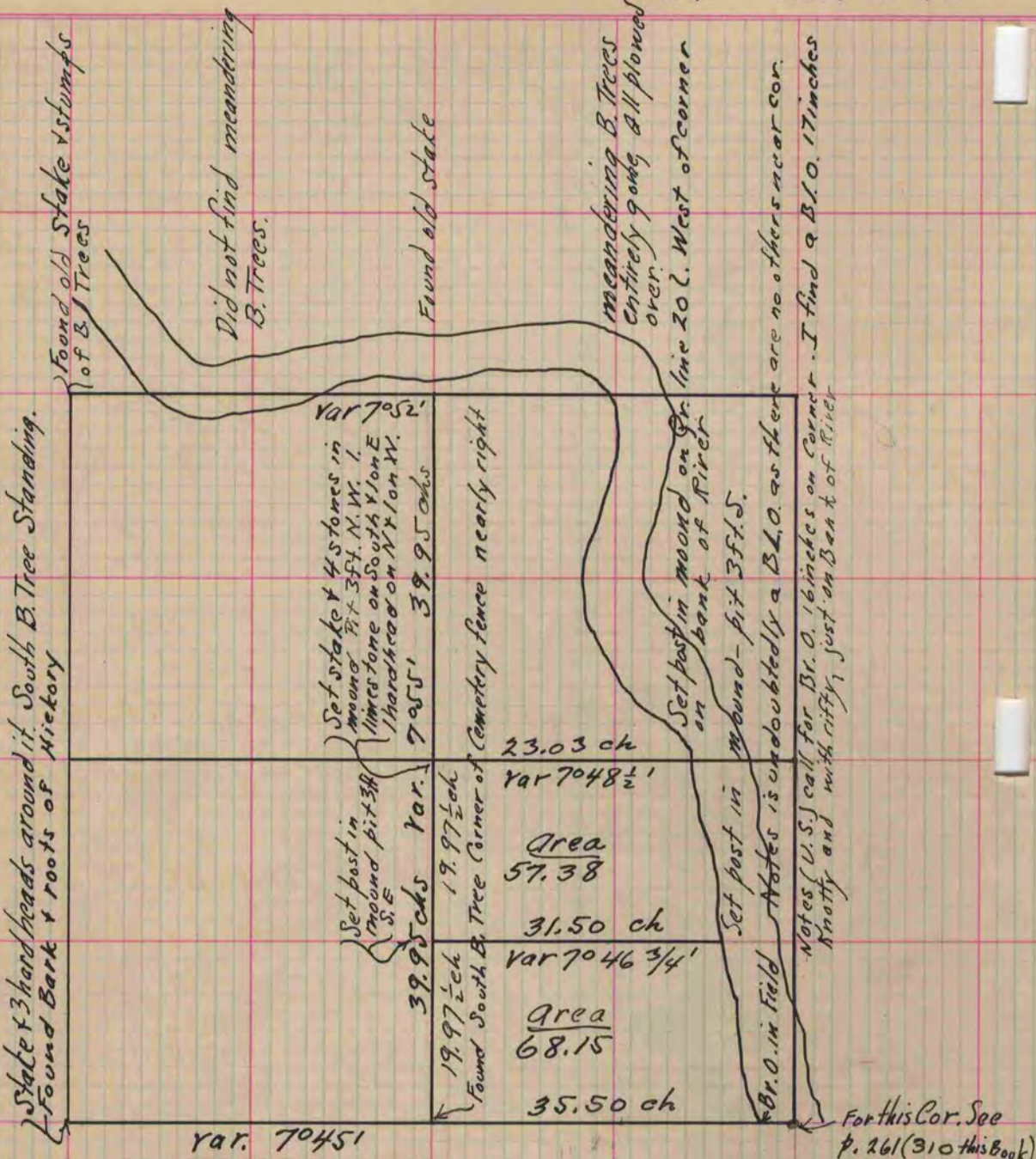
PLAT AND RECORD

Of a Survey on Section 23 T 3 R 12 E. of the 4 P. M. in Janesville Township
Rock County, Wisconsin, made August the 14-18-20th 1863

I hereby certify that the following is a correct record of said survey as made by me.

COUNTY BUILDING
CITY OF JANESVILLE

(Signed) S. D. Locke
R.H.B. County Surveyor.



Meander-line of River of River Commences on South Line of Section at Br. or Bl. O. 17 inches on Corner, on River, running thence North 19 1/2 West, 3 chs; thence N. 17 1/2 W., 5 chs; thence N. 13 1/2 W., 7 chs; thence N. 15 1/2 W., 2 chs; thence N. 20 1/2 W., 2 chs; thence N. 60 3/4 W., 1.74 1/2 chs; thence N. 13 E., 2 chs; thence N. 12 W., 1 ch; thence N 28 3/4 W., 4 chs; thence N 32 W., 2.75 chs; thence N. 31 W., 3.27 chs; thence N 39 1/4 W., 4 chs; thence N. 45 W., 2 chs; thence N 42 W., 3.65 chs to the Quarter line, 20 links East of Post in Mound - Bearings given according to Magnetic Meridian, as indicated by needle

Copied from Page 194 Vol. One Original County Surveyors Record.