

MICROFILMED

PLAT AND RECORD

165  
V-1

COUNTY BUILDING  
CITY OF JANESVILLE

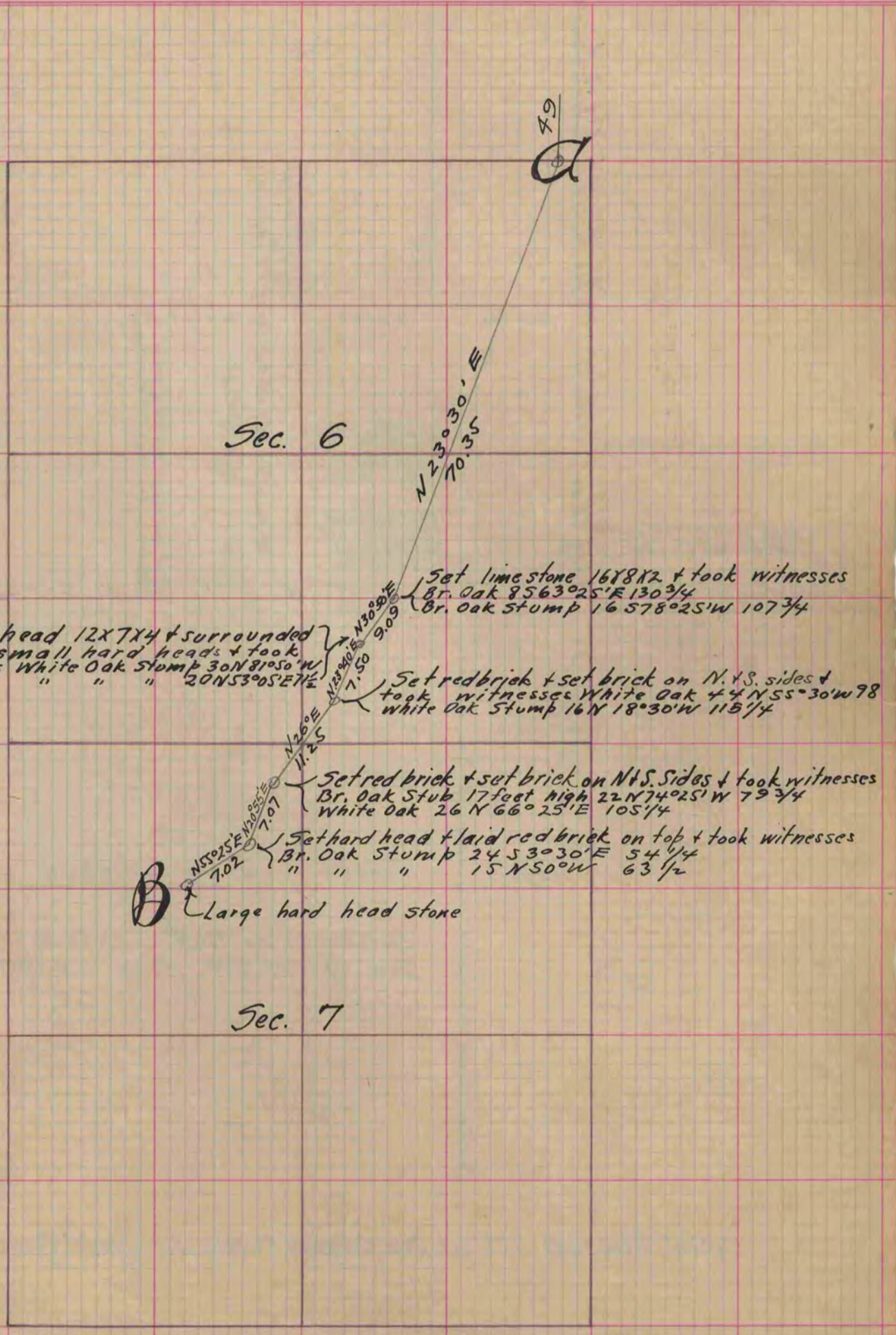
Of a Survey on Sections 6 & 7 T 3 R 13 E. of the 4 P. M. in Harmony Township

Rock County, Wisconsin, made May the 24<sup>th</sup> 1861

I hereby certify that the following is a correct record of said survey as made by me.

(Signed) Edward Roger  
R.H.B. County Surveyor.

Survey made in altering a highway in Sections 6 & 7 of Town 3 Range 13 between points A & B. point marked 'A' is the S.E. Section of Sec. 31 T 4 R 13 Point marked 'B' is a point mentioned in description of former road as being on the line between M. Learned Var. 8° East



Sec. 6

Sec. 7

A

B

N 23° 30' E  
70.35

Set limestone 16x8x2 & took witnesses  
Br. Oak 8563°25'E 130 3/4  
Br. Oak Stump 16 578°25'W 107 3/4

Set red brick & set brick on N. & S. sides & took witnesses  
White Oak & 4 N 55° 30' W 98  
White Oak Stump 16 N 18° 30' W 115 1/4

Set red brick & set brick on N & S. Sides & took witnesses  
Br. Oak Stub 17 feet high 22 N 74° 25' W 79 3/4  
White Oak 26 N 66° 25' E 105 1/4

Set hard head & laid red brick on top & took witnesses  
Br. Oak Stump 24 53° 30' E 54 1/4  
" " " 15 N 50° W 63 1/2

Set hard head 12x7x4 & surrounded it by 3 small hard heads & took witnesses  
White Oak Stump 30 N 81° 50' W 71 1/2  
" " " 20 N 53° 05' E 7 1/2

Large hard head stone

Copied from Page 174 Vol. One Original County Surveyors Record