

# PLAT AND RECORD

**MICROFILMED**

COUNTY BUILDING  
CITY OF JANESVILLE

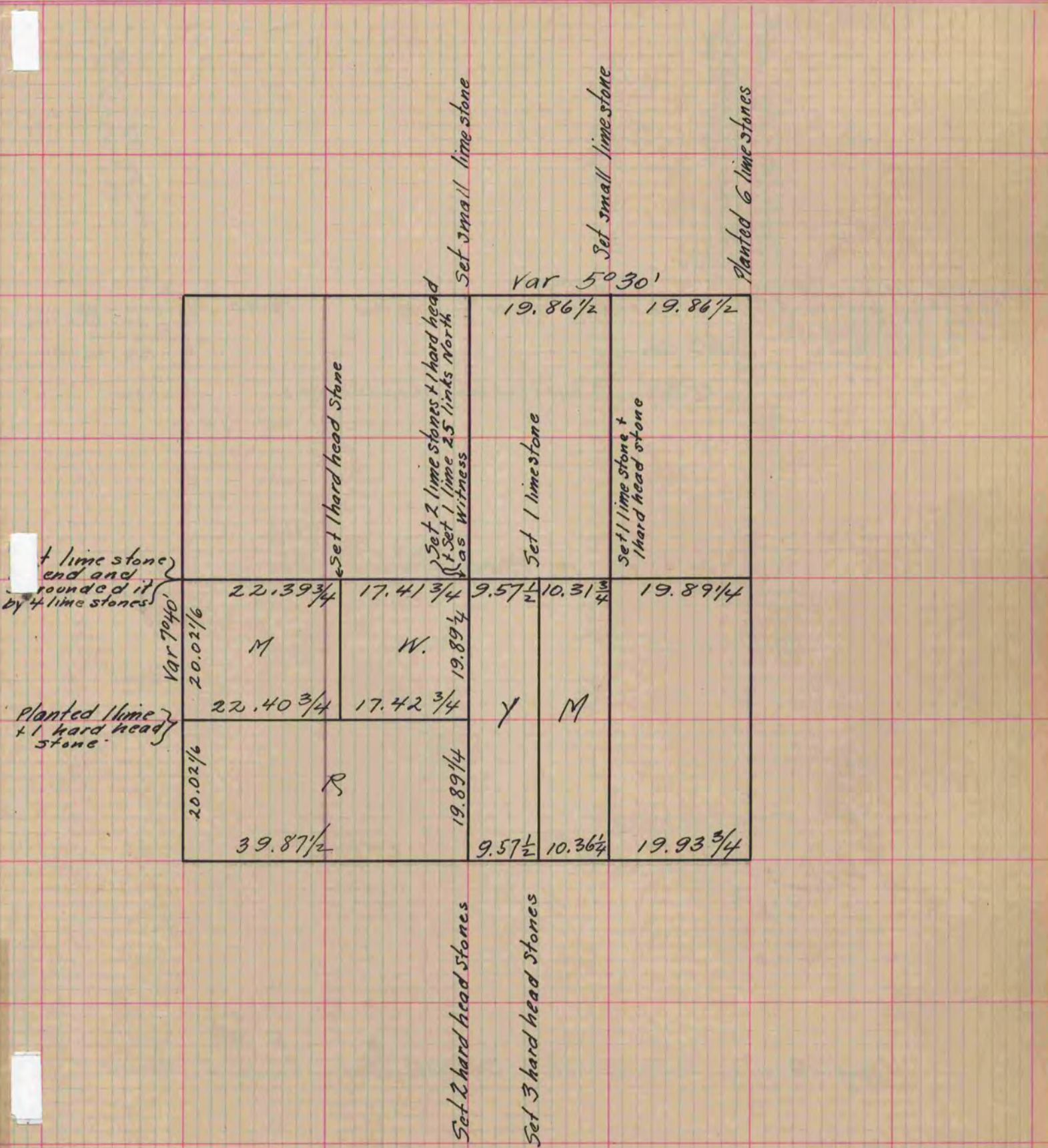
Of a Survey on Section 35 T 3 R 13 E. of the 4 P. M. in Harmony Township

Rock County, Wisconsin, made February the 20<sup>th</sup> 1860

I hereby certify that the following is a correct record of said survey as made by me.

(Signed) Edward Ruger

County Surveyor.



Copied from Page 134 Vol. 1. Original County Surveyors Record