

MICROFILMED

PLAT AND RECORD

Of a Survey on Section 35 T 2 R 11 E. of the 4 P. M. in Plymouth Township
Rock County, Wisconsin, made March the 26th 1856

I hereby certify that the following is a correct record of said survey as made by me.

COUNTY BUILDING
CITY OF JANESVILLE

(Signed) Joseph Church
R.H.B. County Surveyor.

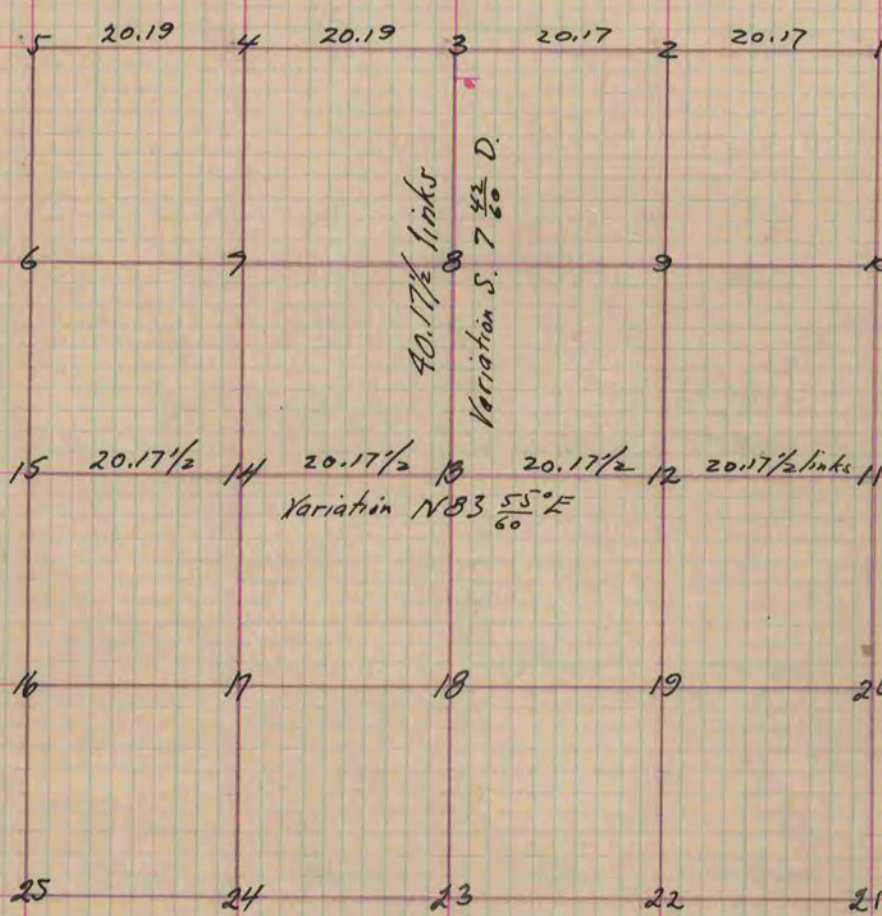


Fig 13 W. O. 20 N 67 W. 46
 30 N 85 1/2 E 95
 12 Br. O. 12 S 20 1/4 W. 22.5
 " " 16 N 18 3/4 W. 35.3
 14 W. O. 24 N 70 W. 22 1/2
 20 S. 57 W. 66
 4 W. O. 20. N 55 W. 120
 2 Bl. O. 20 N 66 E 70

Copied from Page 63 Vol. 1. Original County Surveyors Record