

Of a Survey on Section 9 T 1 R 14 E. of the 4 P. M. in Clinton Township  
Rock County, Wisconsin, made September the 7th 1855

I hereby certify that the following is a correct record of said survey as made by me.

COUNTY BUILDING  
CITY OF JANESVILLE

(Signed) Joseph Church  
R.H.B. County Surveyor.

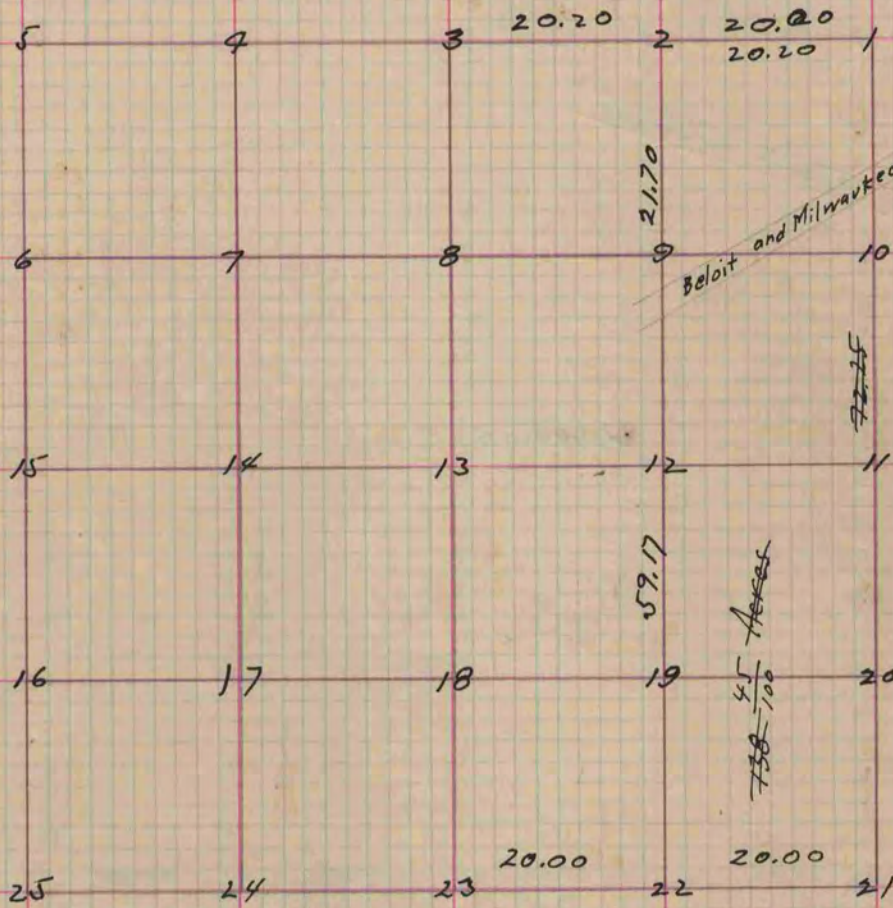


Fig. 9 is 21.70 links South on the line from Fig 2 and  
 is in the Centre of the Beloit and Milwaukee Rd  
 Fig. 22 Stake and Stone  
 23 Mound  
 21 Post in Mound  
 From Fig 21 to Highway 72.25 links

Copied from Page 50 Vol. 1. Original County Surveyors Record