

MICROFILMED

PLAT AND RECORD

39
VI

Of a Survey on Section 3 T 2 R 11 E. of the 4 P. M. in Plymouth Township

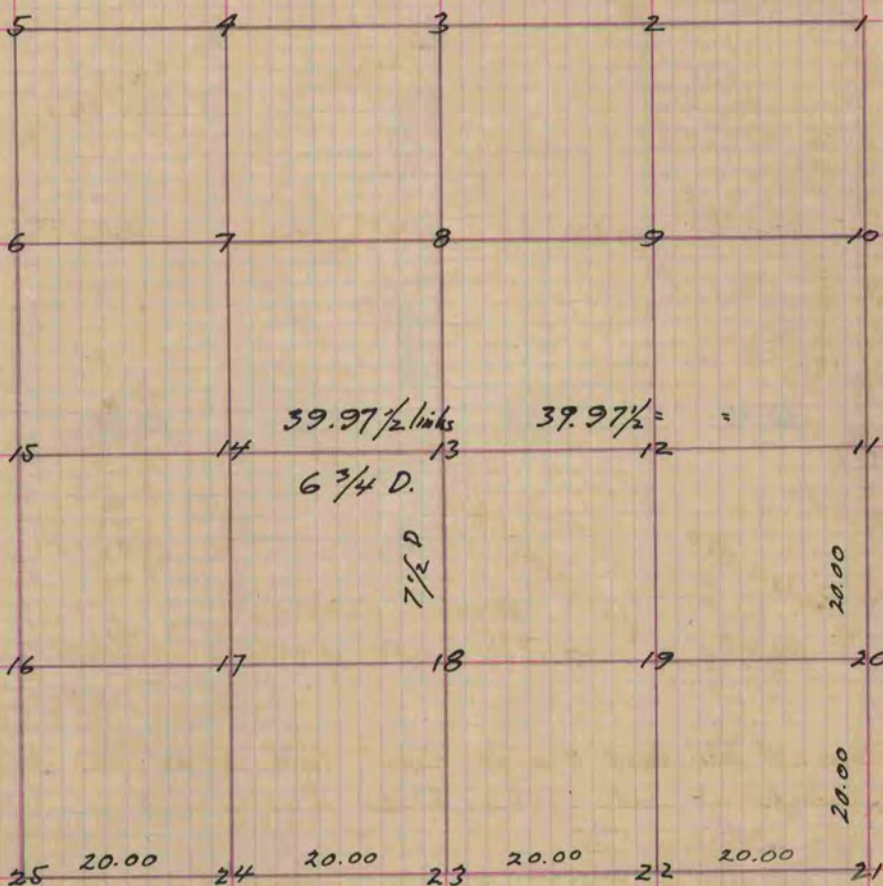
Rock County, Wisconsin, made May the 29 1855

I hereby certify that the following is a correct record of said survey as made by me.

(Signed) Joseph Church
R.H.B.

County Surveyor.

COUNTY BUILDING
CITY OF JANESVILLE



- Fig. 22 Bass wood four inches N. 66 E. 176 links
- Black Walnut four inches N. 20 E. 81 "
- " 20 Stone 20 long 4 inches thick
- " 11 Stone 18 inch long 4 inch thick Locust 4 S 5 W. 90 9/16 links
- Yellow Oak 16 N 13 W 543

Copied from Page 40 Vol. Original County Surveyors Record