

Of a Survey on Section 27 T 3 R 13 E. of the 4 P. M. in HARMONY Township

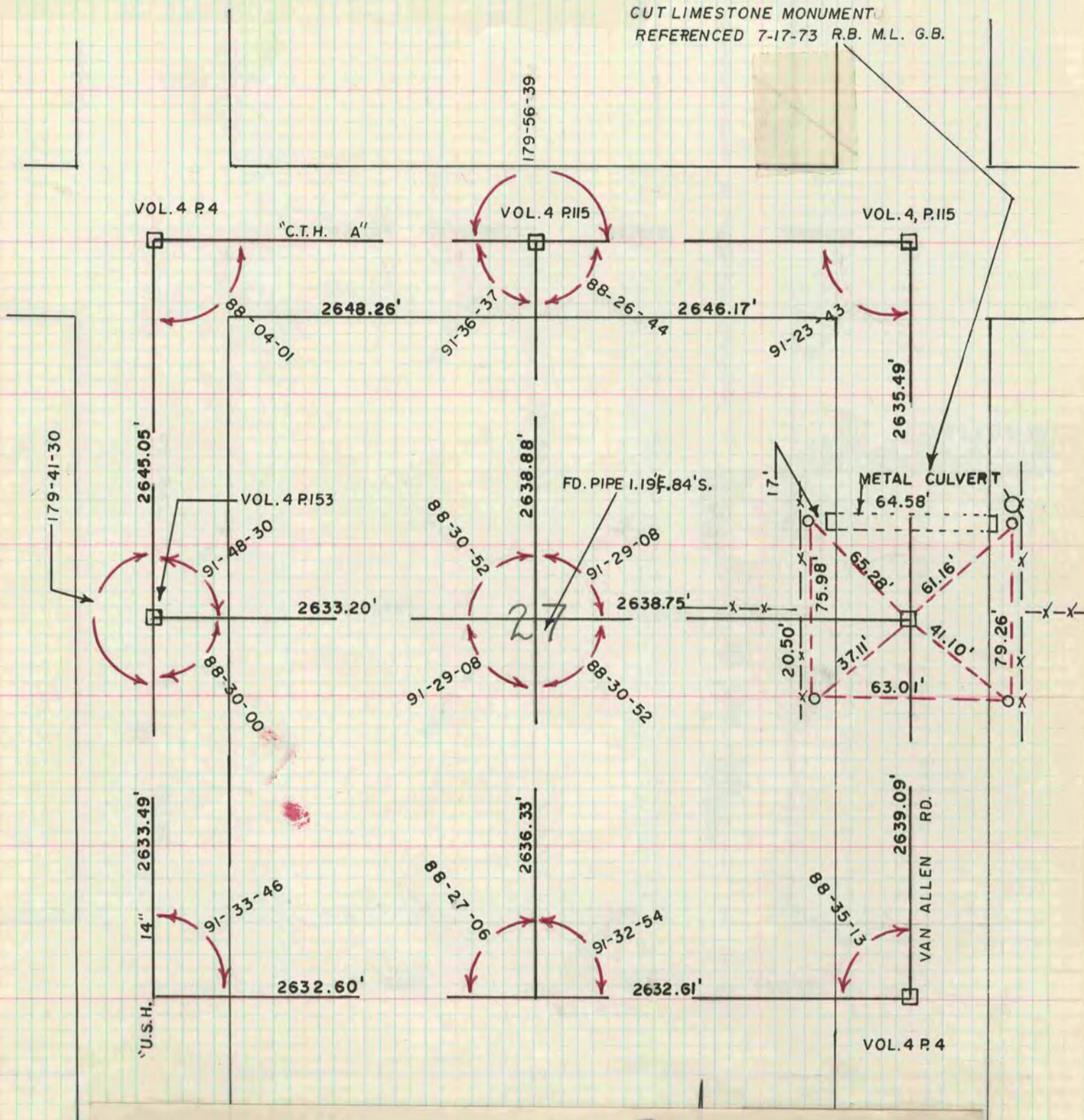
Rock County, Wisconsin, made JULY the 17th 1973

I hereby certify that the following is a correct record of my surveys made by me.

County Surveyor.

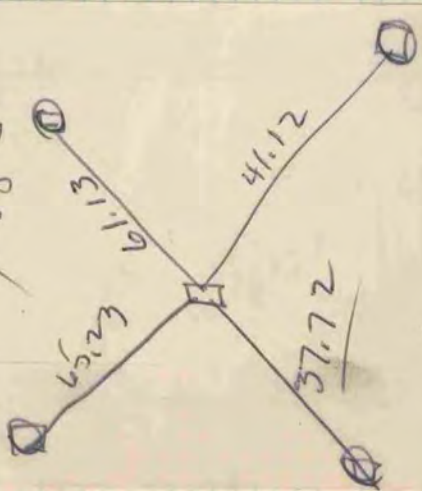
BELOIT SET [LOOSE-LEAF BOUND]

AT E1/4 COR. SEC. 27-3-13 DUG AND FOUND
CUT LIMESTONE MONUMENT
REFERENCED 7-17-73 R.B. M.L. G.B.



*Harmony
E 1/4 of 27*

Vol 1 / Pg 5



9/30/74

*H. Combs called
in corrected ties
to stone @ cor*