

PLAT AND RECORD

547

Of a Survey on Section **36** T **3 N.** R. **13** E. of the 4 P. M. in **HARMONY** Township

Rock County, Wisconsin, made **MAY** the **28 th** 1971

I hereby certify that the following is a correct record of said survey as made by me.

COUNTY BUILDING
IN CITY OF BELOIT

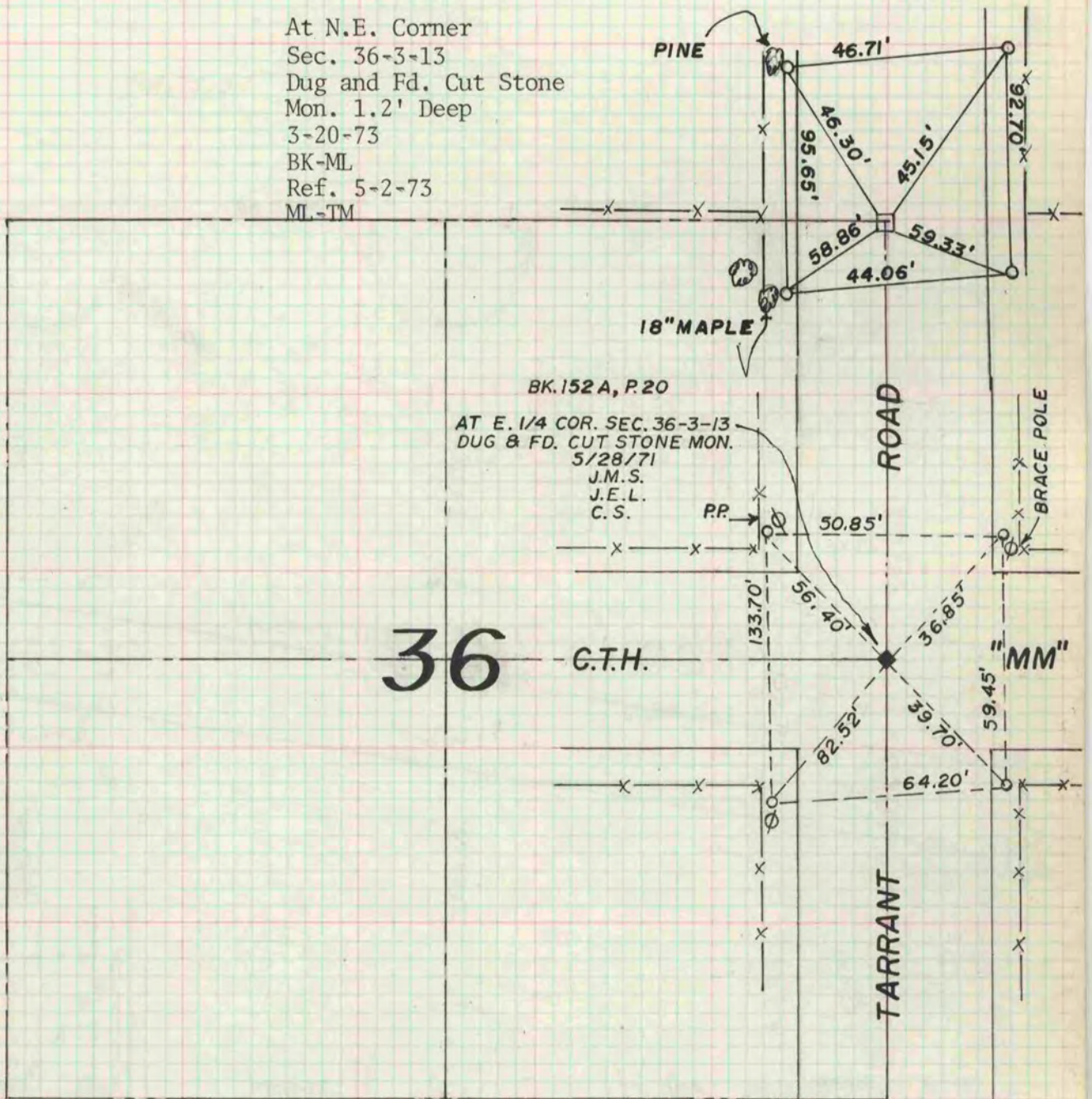
COUNTY BUILDING
IN CITY OF BELOIT

Hugh J. Lee

County Surveyor.

THE GEO. D. BARRETT COMPANY, ST. LOUIS

At N.E. Corner
Sec. 36-3-13
Dug and Fd. Cut Stone
Mon. 1.2' Deep
3-20-73
BK-ML
Ref. 5-2-73
ML-TM



NOTE : O = 1"x24" IRON PIPE REF. MON.