

PLAT AND RECORD

389

Of a Survey on Section 11 T 4 R 13 E. of the 4 P. M. in MILTON Township

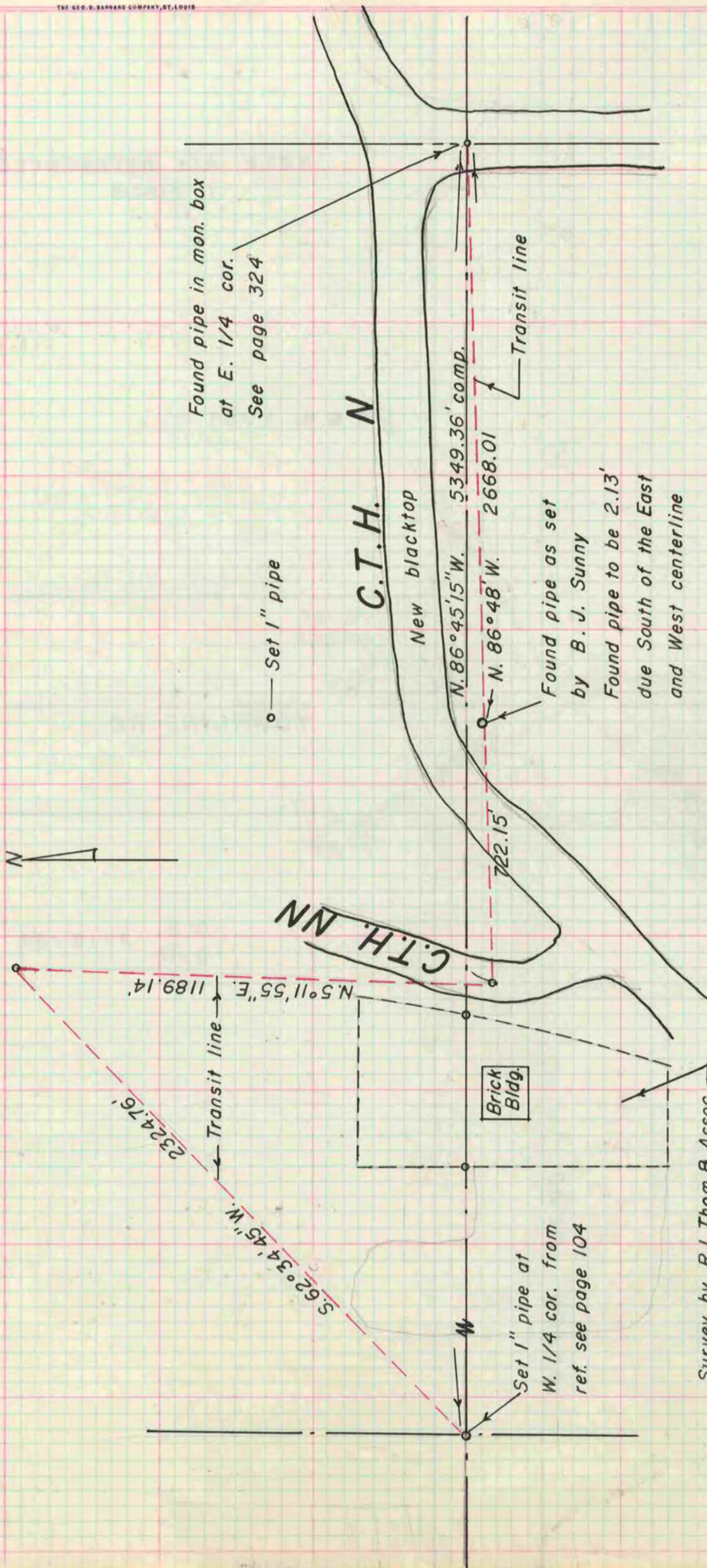
Rock County, Wisconsin, made JANUARY the 28th 1969

I hereby certify that the following is a correct record of said survey as made by me.

COUNTY BUILDING
IN CITY OF BELOIT

R. L. Batteman Jr

County Surveyor.



COUNTY BUILDING
IN CITY OF BELOIT

All Bearings are True Bearings
All distances measured with a Model 6-Geodimeter
All angles measured with a Wild T1A

Survey by R.L.Thom & Assoc.
Order No. 699