

PLAT AND RECORD

Of a Survey on Section **33** T **2** R **14** E. of the 4 P. M. in **BRADFORD** Township

Rock County, Wisconsin, made the **19 64**

I hereby certify that the following is a correct record of said survey as made by me.

**COUNTY BUILDING
IN CITY OF BELoit**

Richard H. Batten

County Surveyor.

THE GEO. D. BARNARD COMPANY, ST. LOUIS

EMIL HUG YOUNG
COUNTY BUILDING
IN CITY OF BELoit

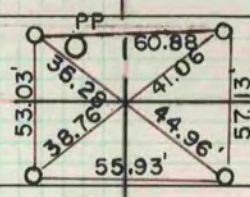
SEE P. 420 E 420

SEE P. 420 E 420

420 P

P 420

33



C. SHIMEALL FOUND
LIMESTONE AT E. 1/4
CORNER SET BY E. RUGER
C. SHIMEALL SET R.R.
SPIKE OVER LIMESTONE
REFERENCED R.R. SPIKE
11-7-64
H. COMBS-C. GARNER

SEE P. 420 E 420

B-C TOWNLINE

ROAD