

PLAT AND RECORD

Of a Survey on Section 24 T 3 R 12 E. of the 4 P. M. in JANESVILLE Township

Rock County, Wisconsin, made 19 the 19

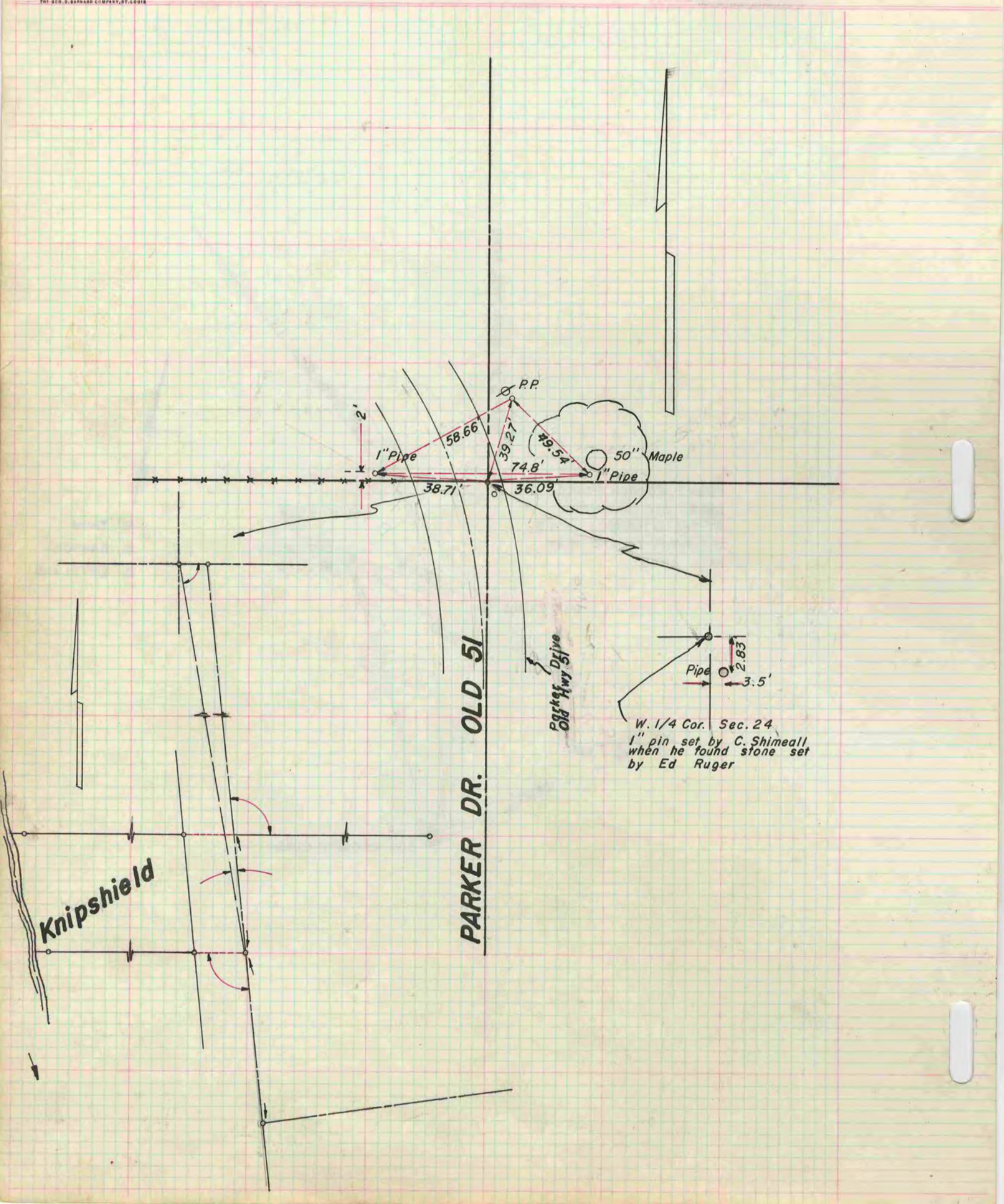
I hereby certify that the following is a correct record of said survey as made by me.

COUNTY BUILDING
IN CITY OF БЕЛОIT

R. B. ...

County Surveyor.

THE GEO. D. BARNARD COMPANY, ST. LOUIS



W. 1/4 Cor. Sec. 24
1" pin set by C. Shimeall
when he found stone set
by Ed Ruger