

PLAT AND RECORD

COUNTY BUILDING
IN CITY OF BELoit

Of a Survey on Section 13 T 2 R 13 E. of the 4 P. M. in LAPRAIRE Township

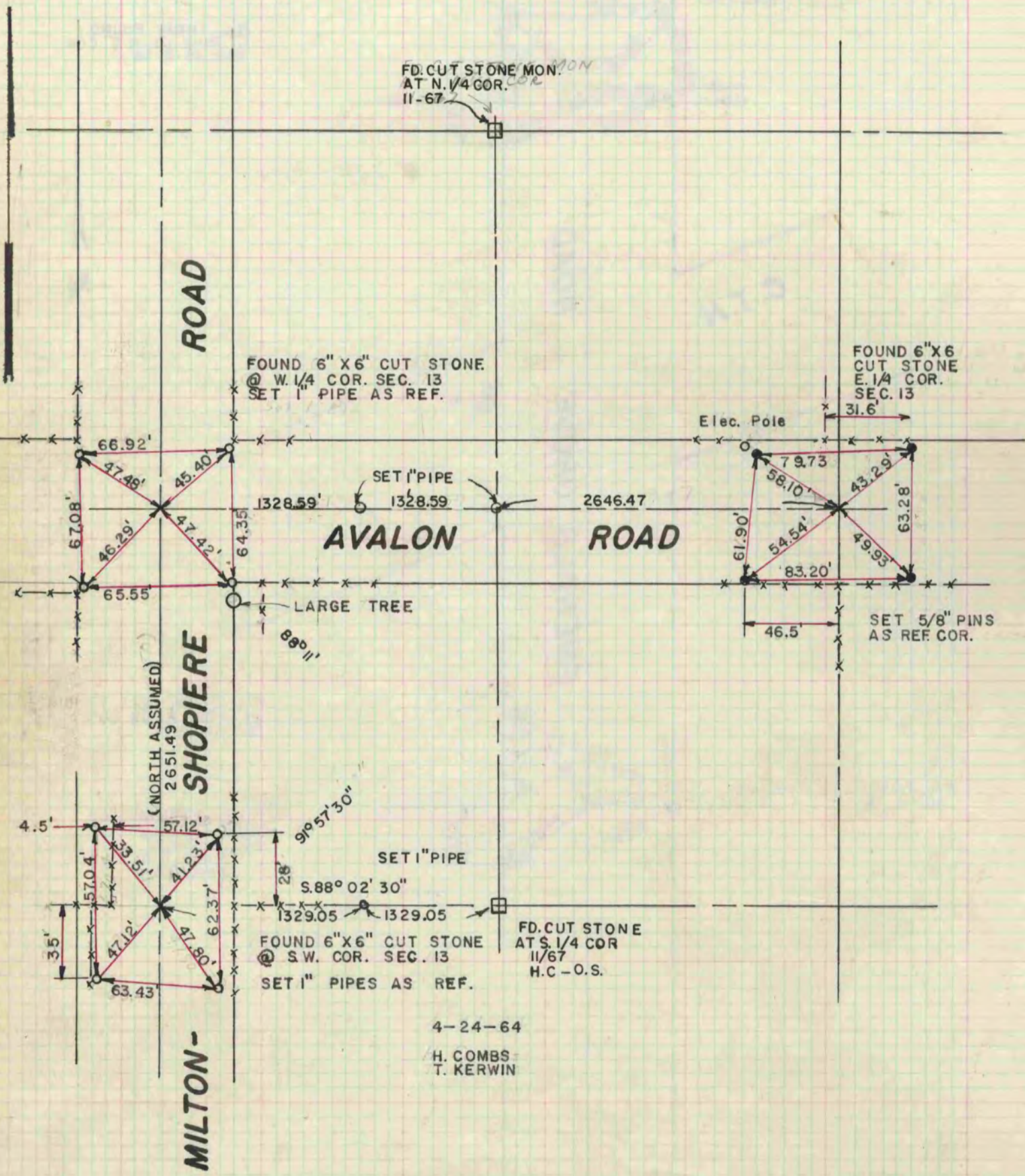
Rock County, Wisconsin, made APRIL the 24th 1964

I hereby certify that the following is a correct record of said survey as made by me.

R. Batteman

County Surveyor.

THE GEO. D. BARNARD COMPANY, ST. LOUIS



4-24-64

H. COMBS
T. KERWIN