

PLAT AND RECORD

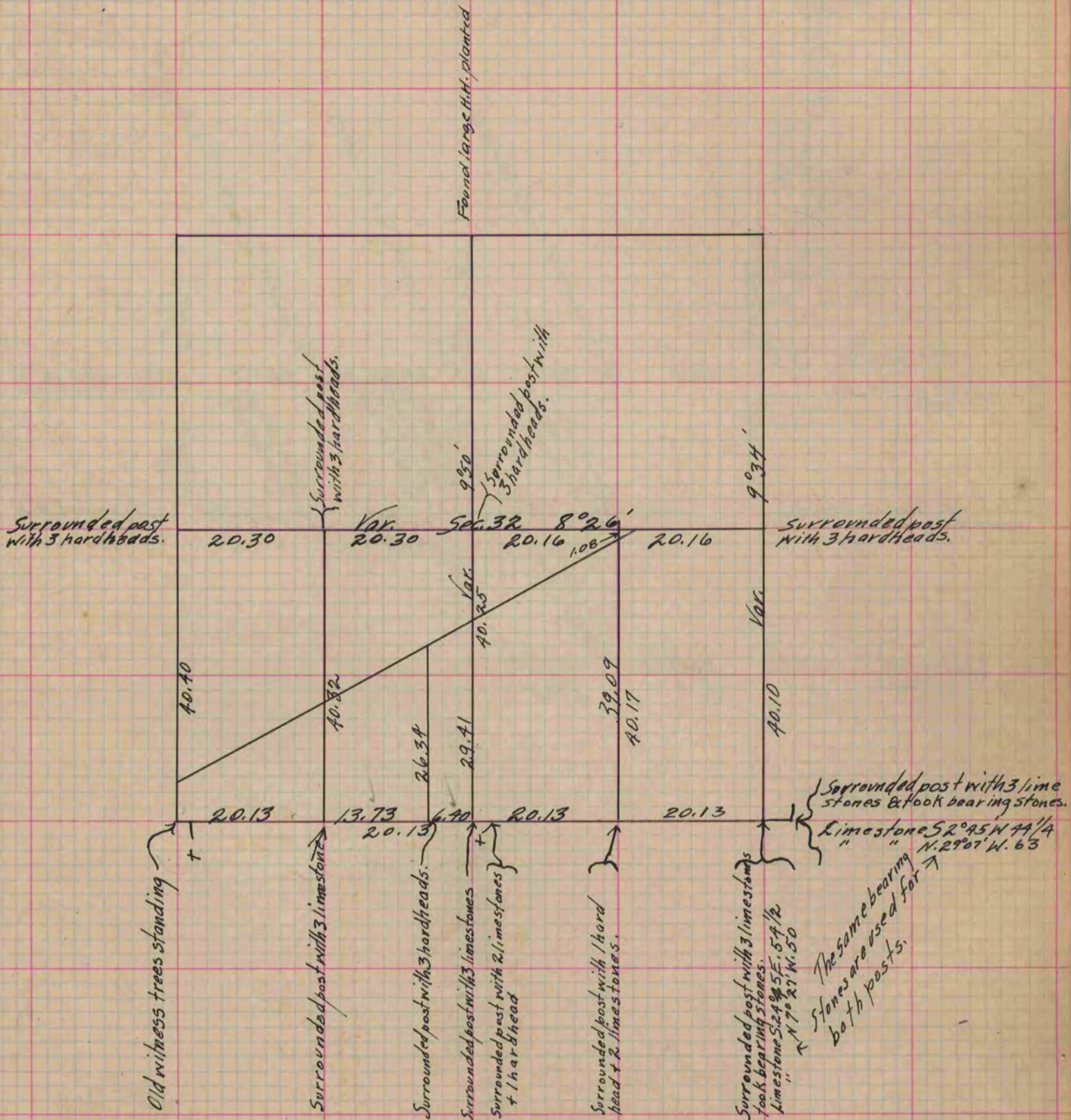
Of a Survey on Section 32 T 3 R 12 E. of the 4 P. M. in Janesville Township
 Rock County, Wisconsin, made August the 30th and 31st 1859

I hereby certify that the following is a correct record of said survey as made by me.

COUNTY BUILDING
 IN CITY OF BELOIT

(Signed) Edward Ruger
 RHR

County Surveyor.



+ The posts of the Sec. in the Town of Rock are 25 links East of those for Janesville.

Copied from Page 120 Vol. 1 Original County Surveyor's Record.