

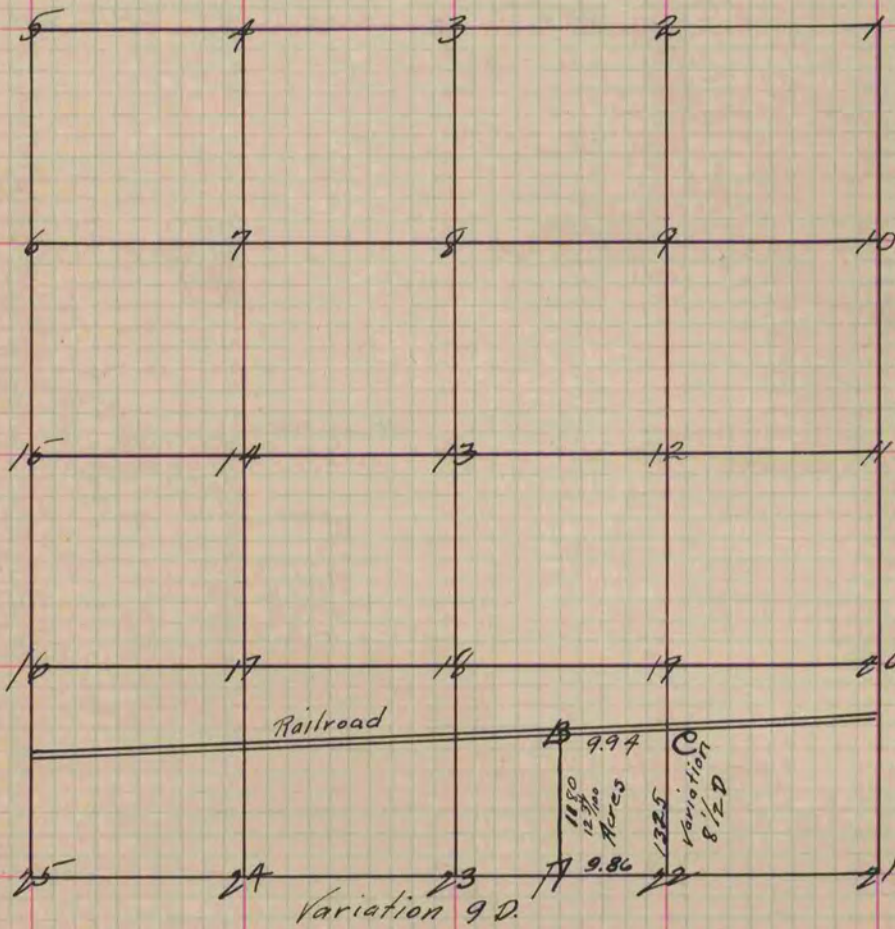
PLAT AND RECORD

Of a Survey on Section 15 T 2 R 10 E. of the 4 P. M. in Spring Valley Township
Rock County, Wisconsin, made April the 2nd 1857

I hereby certify that the following is a correct record of said survey as made by me.

COUNTY BUILDING
IN CITY OF BELOIT

(Signed) Joseph Church by Chas. H. Brown
Deputy County Surveyor.



- Fig. 22 Stump N. 18 W. 10 1/2
- " S. 57 W. 85
- A. Br. 10 inch N. 37 W. 51
Stump S. 24 1/2 W. 33 1/4
- B. Br. 12 inch S. 77 W. 154 1/2
- " " 10 " S. 75 E. 61 3/4
- C Stump S. 57 1/2 E. 37
- " S. 49 1/2 W. 111

Copied from Page 73 Vol. One. Original County Surveyors Record