

PLAT AND RECORD

Of a Survey on Section 5 T 4 R 10 E. of the 4 P. M. in Union Township
 Rock County, Wisconsin, made March the 7th 1856

I hereby certify that the following is a correct record of said survey as made by me.

COUNTY BUILDING
 IN CITY OF BELOIT

(Signed) Joseph Church
 County Surveyor.

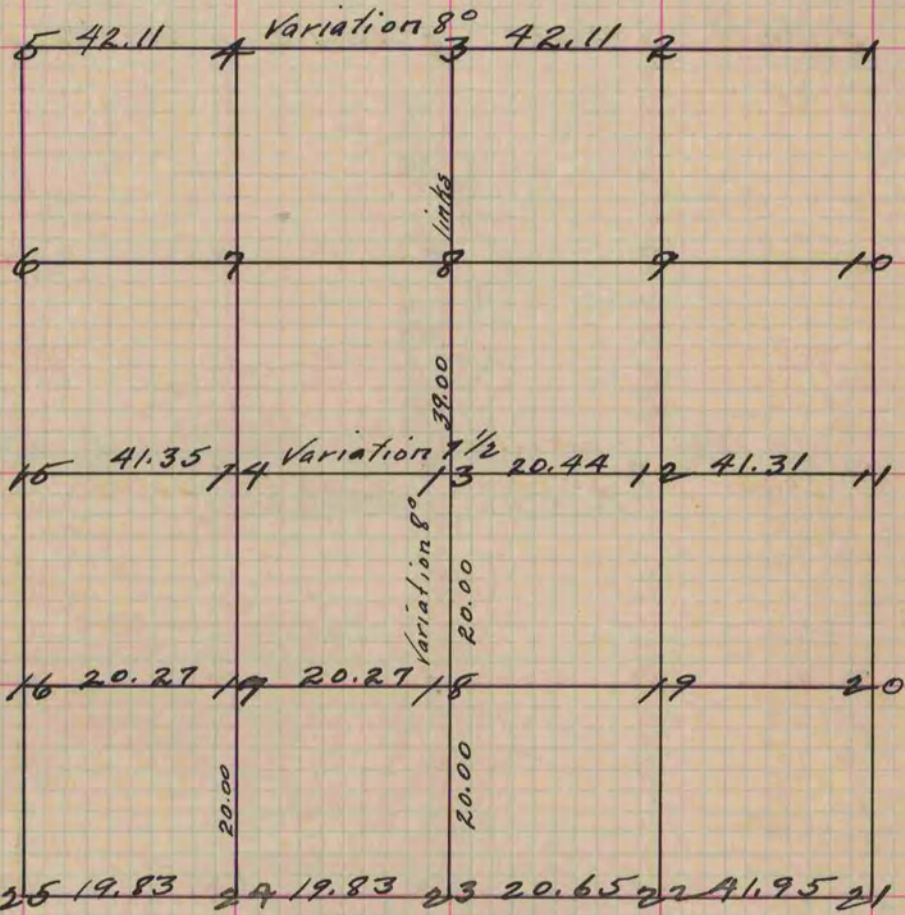


Fig. 25 Wit. trees incorrect took others.
 Br. O. 24 S. 58 1/2 E. 95
 24 N. 58 E. 94
 " 24 18 N. 32 1/2 E. 15
 10 S. 81 W. 35
 " 22 14 N. 61 W. 83
 24 N. 81 W. 89
 " 13 24 S. 42 E. 147
 Schoolhouse N.E. Corner
 S 51 E. 47
 " 12 Bl. O. 12 S. 42 1/2 E. 35 1/2
 18 N. 69 W. 110 1/2
 " 17 16 S. 89 E. 6 1/2
 Br. O. 20 S. 78 W. 106
 " 16 Bl. O. S. 35 E. 44 1/2 - Bl. O. 12 N. 52 E. 41 1/2

Fig. 5 trees mostly decayed, took other trees
 Br. O. 20 S. 46 W. 56
 " " 16 S. 73 1/4 E. 88
 Fig. #3 Bl. O. 10 S. 7 1/4 E. 164
 Hickory 5 S. 19 W. 35 1/2

The above Survey was made March 18th 1856
 Joseph Church County Surveyor.

Copied from Page 62 Vol. 1
 Original County Surveyors Record.