

PLAT AND RECORD

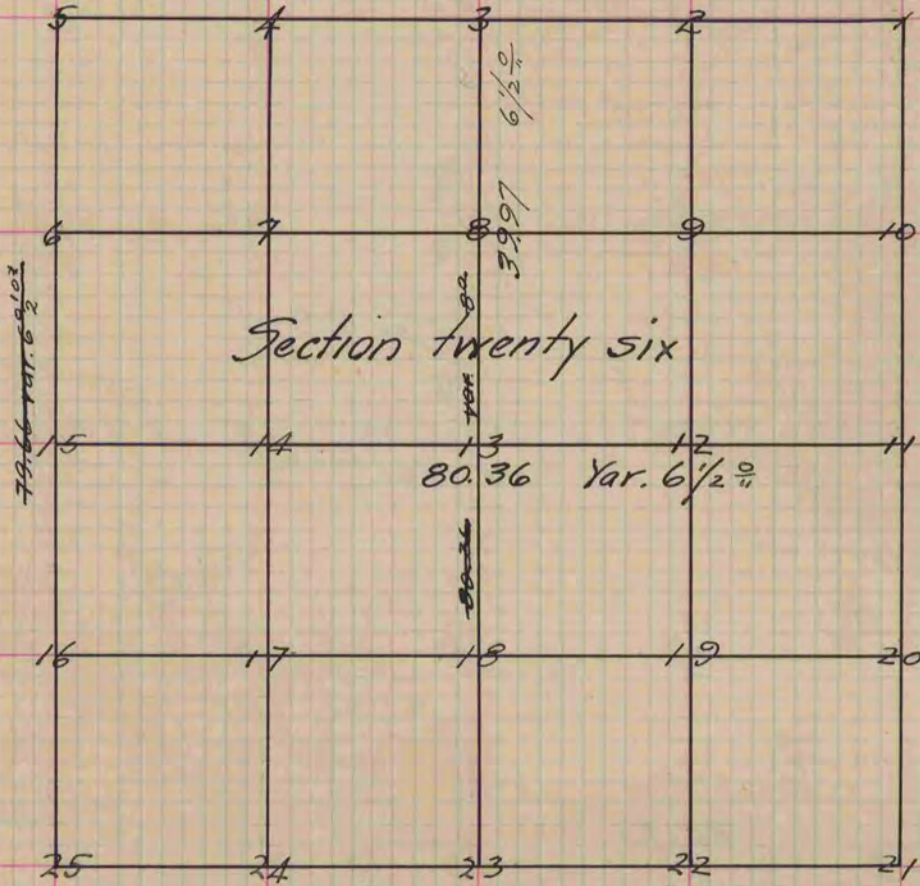
Of a Survey on Section 26 T 1 R 10 E. of the 4 P. M. in Aron Township
 Rock County, Wisconsin, made June the 8th 1854

I hereby certify that the following is a correct record of said survey as made by me.

COUNTY BUILDING
 IN CITY OF BELOIT

(Signed) Peter McVean
 R.H.B.

County Surveyor.



- Figure 13 represents the centre of the section.
- Fig. 13 lime stone 16 inches long 8 wide and 4 thick the top even with the surface of the ground.
 - " 9 Bl. O. 15 N. 47 1/2 E. 96 Also Bl. O. 85.39 W. 1.14 also a limestone 14 inches long 8 wide and 4 thick the top burried in the ground even with the surface
 - " 8 Burried a lime stone 12 inches long 8 wide and 5 thick even with surface
 - " 14 Bl. O. 10. S. 86 1/2 E. 2. 54 No other
 - " 12 Bl. O. 6 S. 17 1/2 W. 57 also burried a lime stone 15 inches long 6 wide and 3 inches thick even with the surface

Copied from p. 29 Vol. 1. Original County Surveyors Record