

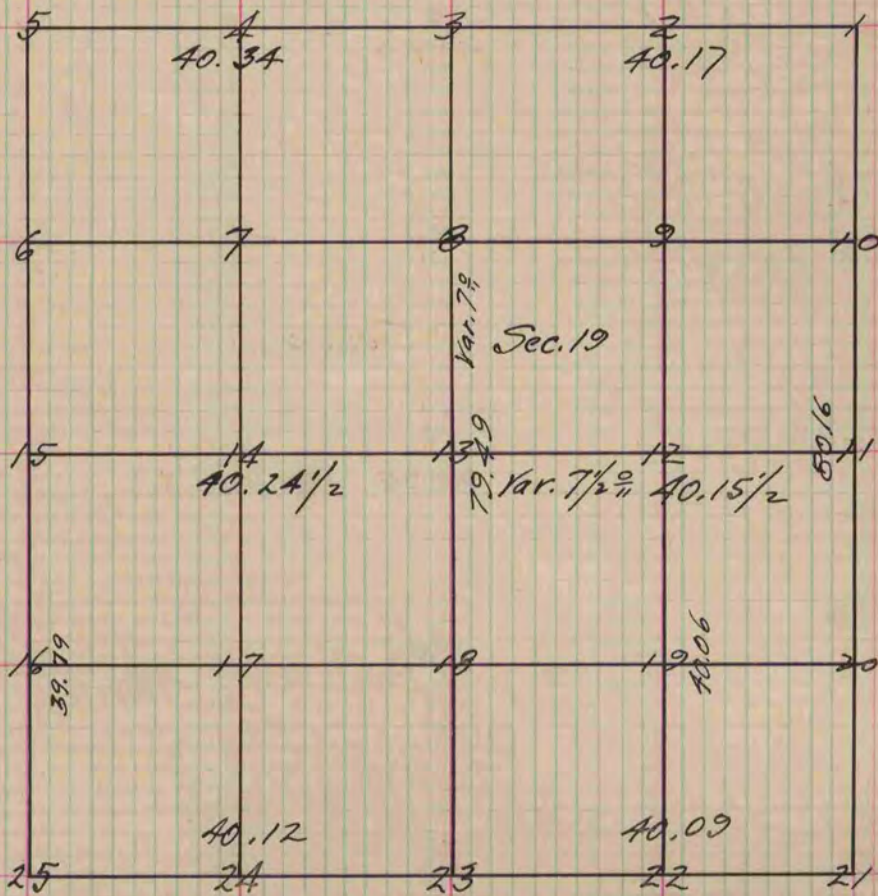
## PLAT AND RECORD

Of a Survey on Section 19 T 2 R 11 E. of the 4 P. M. in Plymouth Township  
 Rock County, Wisconsin, made April the 19<sup>th</sup> 1854

I hereby certify that the following is a correct record of said survey as made by me.

COUNTY BUILDING  
 IN CITY OF BELOIT

(Signed) Peter McVean  
 R. H. B. County Surveyor.



- Figure 17 represents the centre of the South West Quarter Section
- " 17 Buried a stone even with the surface of the ground one foot long 8 inches wide and six inches thick
  - " 14 Buried a round stone 8 inches long 3 inches below the surface of the ground.
  - " 10 Br. O. 14 S. 87 E. 30 No other
  - " 2 Br. O. 25 N. 21 1/2 W. 1.22 Also Br. O. 22 N. 43 W. 190
  - " 7 Post in Prairie
  - " 12 Post on Gravel Knoll
  - " 24 Buried a stone the top even with the surface, a gray stone 12 inches long and 8 inches thick

Copied from page 23 Vol. 1. Original County Surveyors Record