

Pr. O. 20 N. 8 W. 163
" " 26 S. 43 E. 325
The stump of Mr.
B. J. had been
cut up, it was
N. 53 E. 134. The
bearing of all
apex, but the
distance was
not as given
in the field
note.

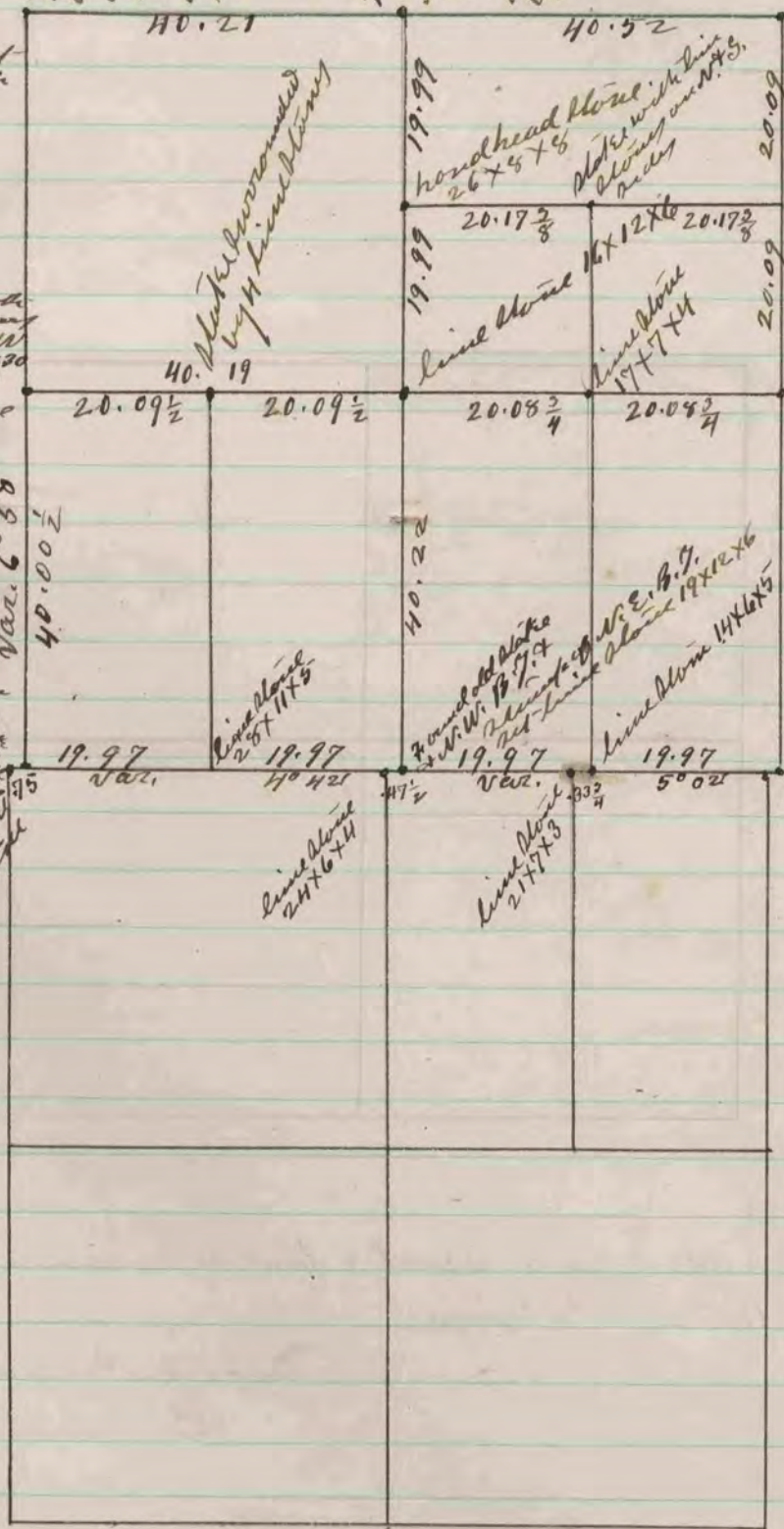
Found W. W.
B. J. it is
N. 82 W. 219
cut but put in
for measurement
correct as per
B. J. and did not
measure.

Did not
put in per-
manent corner
as per his adjacent
did not assist in
his survey.

Found old plat of both
B. J. & W. W. B. J. bears
N. 32 E. 218 & W. N. W.
B. J. bears N. 82 W. 130
set in place of old
plat line stone
22 x 7 x 4 and
surrounded it
by 4 hand head
stones.

Found the hole from
which the plat had
been taken, the hole
was filled with black
earth clear to the
bottom the bottom
was clay - set line
stone 32 x 12 x 7.

Found old plat
set - line stone
31 x 10 x 6



Found hand head
stone at the corner
also found the
N. 53 E. 134. put
in flat-hand
head stone, also
put on top of it
line stone 18 x
8 x 2

Corner as set by
self in former
survey

Corner as set by
self in former
survey

The above is a record & plat of a survey made on
Section 33 Magnolia & Sec. 5 Spring Valley, and is
same as recorded on pages 329 & 332 of this book.
Edward Ruyter
County Surveyor