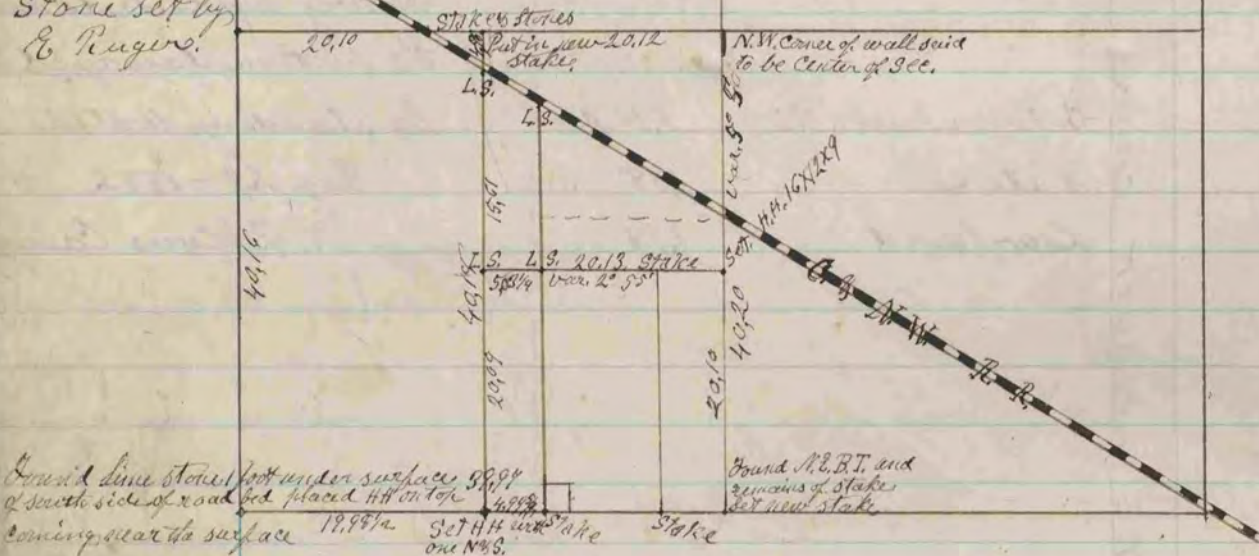
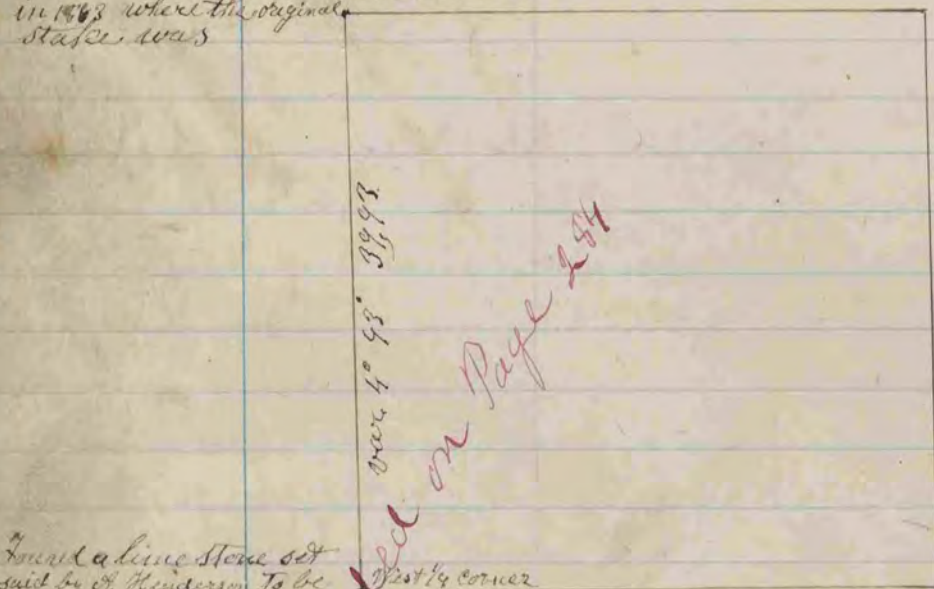


The following is a record and plat of a survey made by,
me on Sec. 1, Twiitle March 28, 1882 J. A. Holmes Co. Surv.

Stone set by
E. Rogers.



Found a line stone set
in 1863 where the original
stone was



Found a line stone set
said by A. Henderson to be
placed there in the spring of
1863 as he says who the stone
and he had seen the stone by the side of the stone since.

The above is a record of a survey made by me
on the west line of the Northwest quarter of Sec. 12
Beloit May 7 - 1882
J. A. Holmes County Surveyor