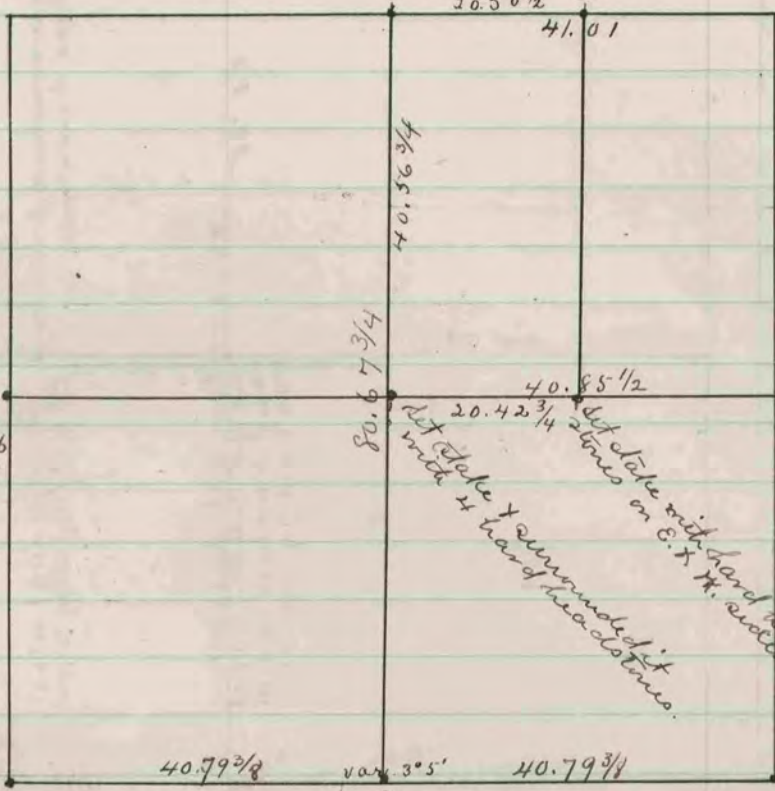


43-139

Found corner as set by self in
former survey.

Put lime stones on sides of corner
fence post. The east side of fence
post is at corner.

Found remains of stump
of old B.T. drive stake
to keep place of B.T. stump
set hard headstone 18x10x8
put hard headstone on
E & W sides.



Established corner.

Found lime stone post on corner & stake
about six inches apart. also found
decayed remains of N.W. B.T. stump.

Found old stake & decayed
remains of wall stump of B.T.
drive near stake in place of old
one & surrounded it by 4 hard
headstones.

The above is a record & plat of a survey made by me
on Sec. 20. T11N. R24E. Aug. 24 & 26. 1886.

Edward Reger
County Surveyor