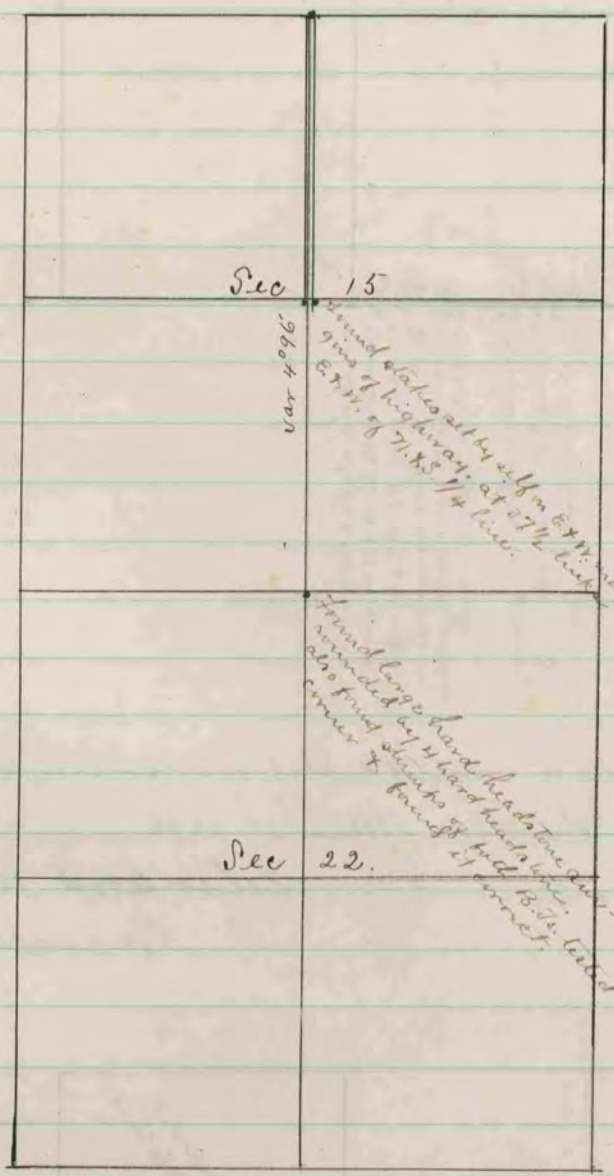


41-118

found hard headstone surrounded by  
4 hard headstones & 1 limestone.  
also where 1st stump had been dug  
up. Found new B.S. N.O. 55.80 1/2 N 44 1/2  
N 22 1/2 S 55 1/4 - N.O. 45 77 1/2 S. 24 1/2  
Drove stake at 37 1/2 links East  
of road. 1 1/4 Cor. for S. N. margin



The above is a record & plat of a survey made by me  
on sections 22 & 15 Johnston, May 17, 1886.  
Edward Rizer  
County Surveyor