

RECORDED & INDEXED
COUNTY SURVEYOR

Found slate surrounded
by stone - also found
stumps of S. E. Williams
vine & where stump of W. E.
Williams was had taken away
safe.

Found slate surrounded
by 3 hand head stones

See W. W. Cor. of Sec.
& opposite page
216

Established quarter
corner from
section corner
Set hard head stone
24x12x12 - it is
6 1/2 links north of
corner set by her

Set hard head
stone 18x9x7 1/2
surrounded it by
4 hand head stones

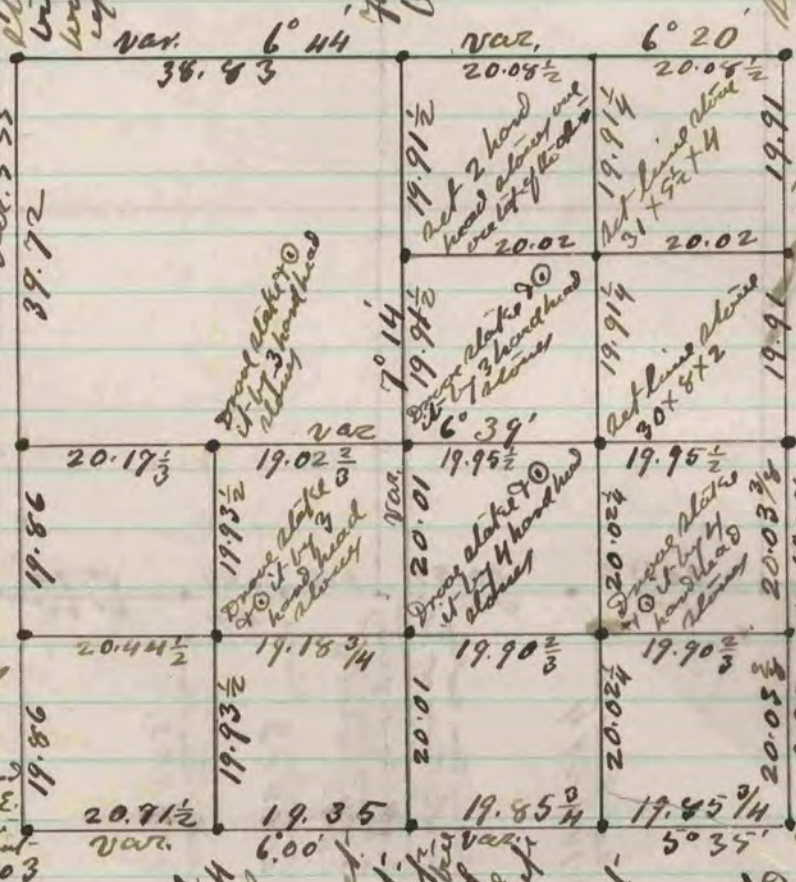
Found remains of
old slate - also found
the Williams vine S. 88 1/2 E.
395 - also where the
stump had been burnt
out - it is S. 66 1/2 E 403
as given in notes
The Cor. established
by me is 24 links north
of Cor. established by Tooke
his Cor. would not agree
with Williams notes - but did
not find Cor. - Set hard
head stone 24x19x9 on
top of slate driven deep

Found slate and
surrounded it by 4
hand head stones

Found corner set
by Tooke corner -
also found stumps
of W. W. Williams vine
& where stump of
S. E. Williams vine
had been dug up

Corner set by
Tooke corner -

Found Williams
vine - also found
corner set by Tooke
corner - also found
slate in place of
old one -



This above is a record and plat
of a survey made by me on section
7 Spring Valley May 2-3+5-1879
Edward Burger
County Surveyor

COUNTY SURVEYOR
RECORD 2 1869-1960