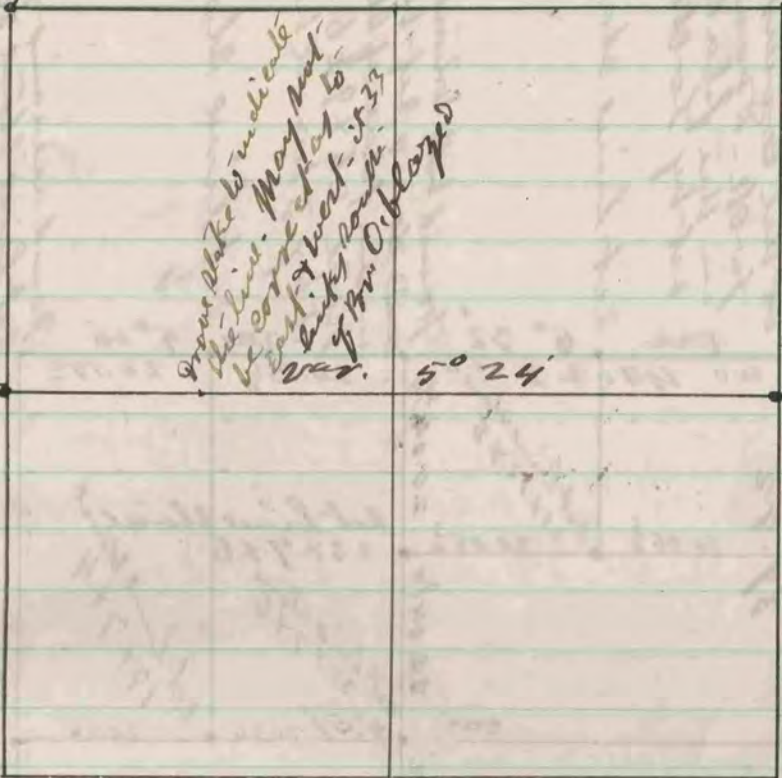


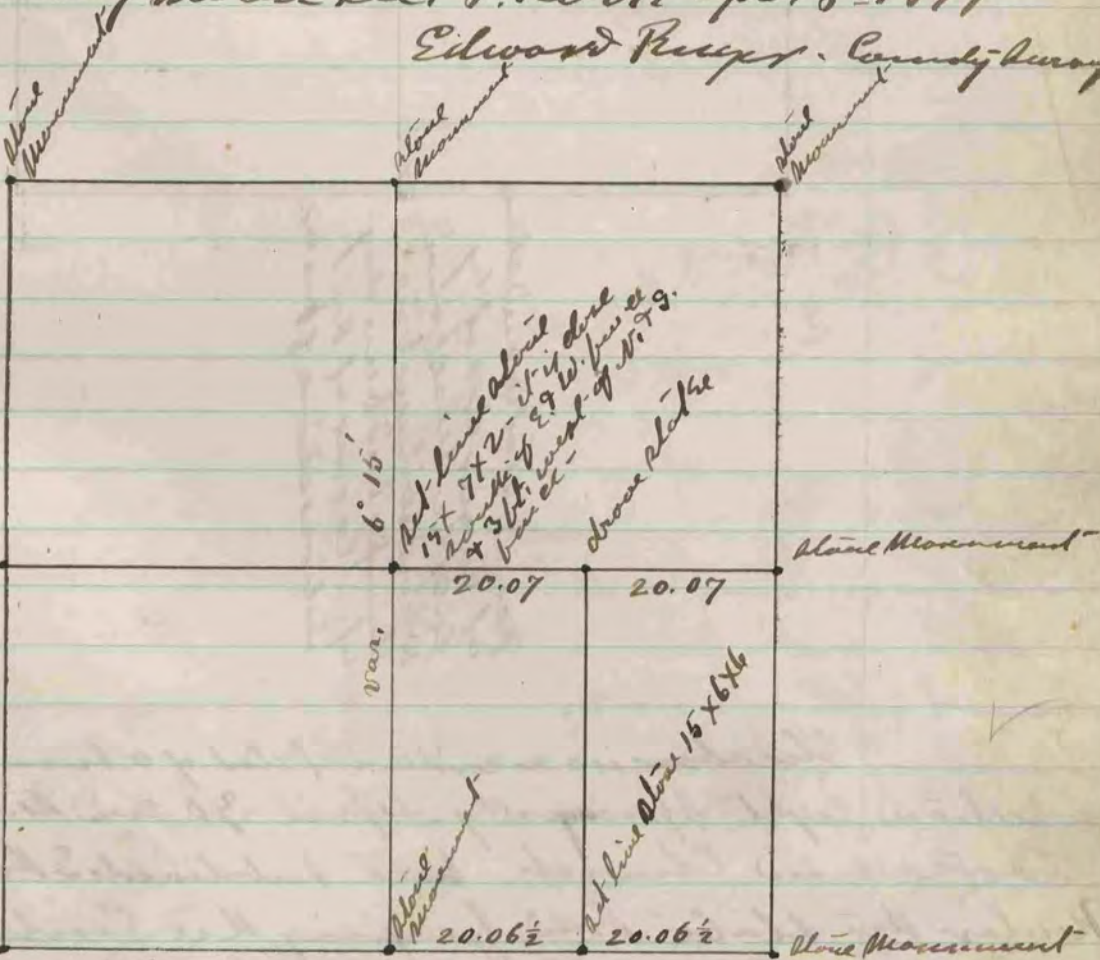
Found corner as  
by Locke corner

Found corner as  
by Locke corner



Draw stake to indicate  
the line. May not  
be correct as far as  
east of west - it is 39  
of 9m. O'cloped.

This above is a record and plat of a survey  
made by me on Dec. 8. 1879  
Edward Puffer, County Surveyor



Set line along  
19 x 7 x 2 - if it is done  
at 3 ft. west of N. 79.  
base etc.

Stone Plate

Set line along 15 x 6 x 6

This above is a record and plat of a survey made  
by me on Dec. 20 1879  
Edward Puffer  
County Surveyor