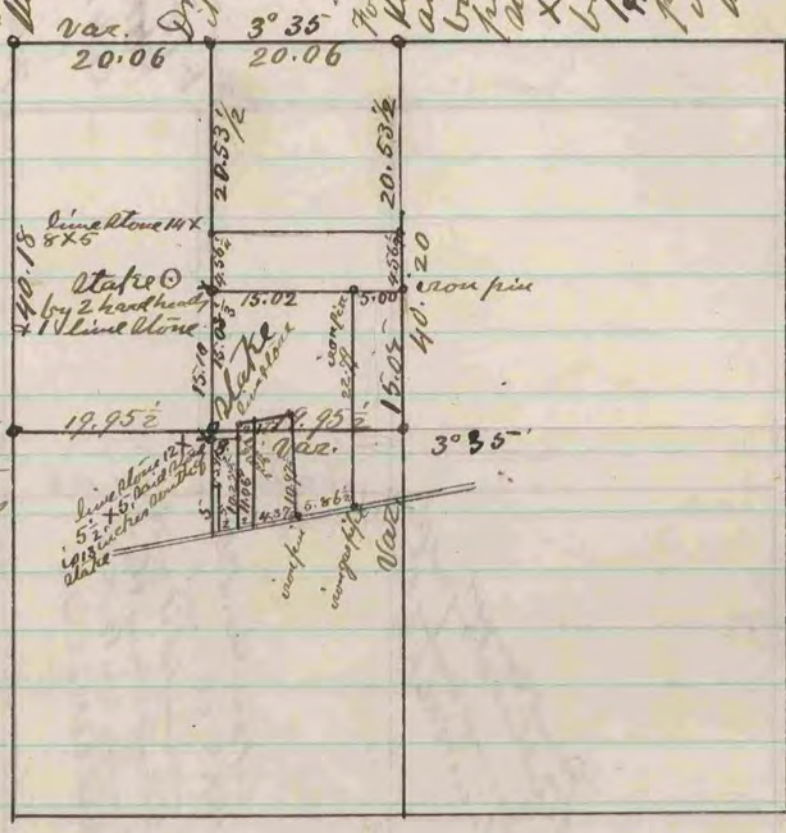


Found very large hardhead
stone at the corner
Marked across the top

Drove stake and surrounded
it by 3 hard head stones

Found remains of old stake in
the center of the highway
and on the East side of
traveled tracks wrapped
up in the pole & of old
stake a lime stone 22x12
x 7 and surrounded it
by 5 hard head stones
Helms Hammer
present when Henry H.
old stake renewed
the corner



Found old stake
set in its place
lime stone 14x8x6
and surrounded it
by 4 hard head stones

I hereby certify that the above is a plat
and record of a survey made by me on
section 8 Clinton May 1-2 & 3 - 1897

Edward Rieger
County Surveyor

COUNTY SURVEYOR
RECORD 2 1869-1900