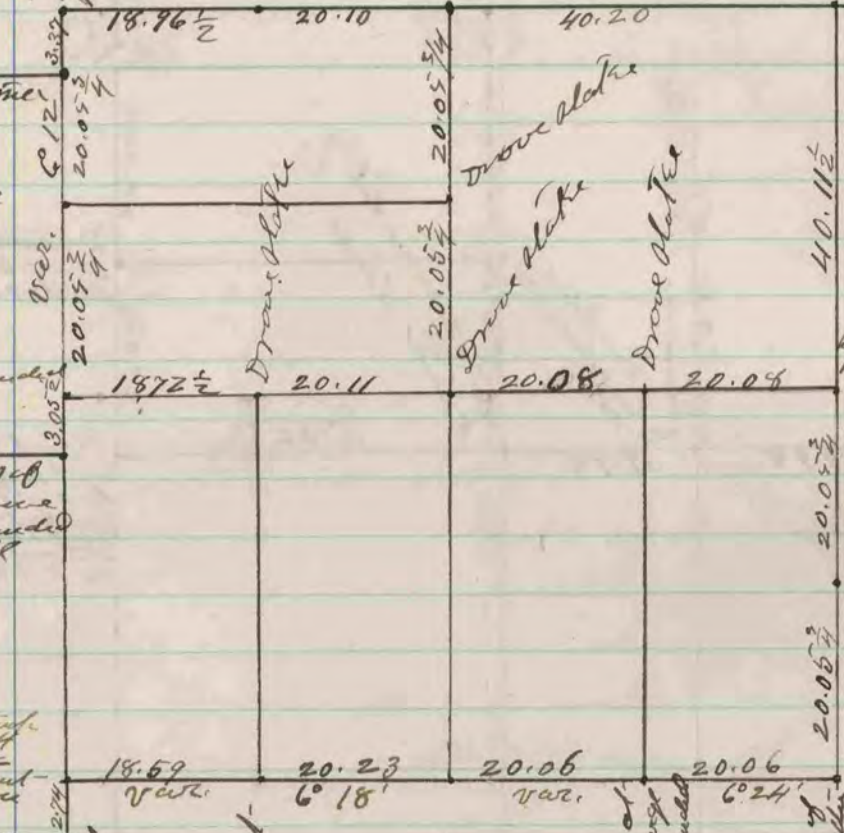


Established Corner from
Corner to Magnolia
Drove station ditch of level
bevel & surrounded
it with small stones



Found of appearance of old
slate - Drove slate
in the place of the old one
& put hard head alone
one E & W. sides

Found hard head
at corner

Drove slate

slate surrounded
by stones -

Found remains of
the N. W. drive
slate & surrounded
it with small

The N. W. drive
is 94 instead of 94
line of level -
Drove slate & put
hard head alone
E & W. sides

Found remains of old slate
and pieces of both N. W.
Drove slate and surrounded
it by a lot of small stones

Drove slate & put hard
head on E & W. sides

Drove cedar slate
at corner

Found hard head alone at
corner - put one lot of large
hard head alone & surrounded
it with smaller stones

Found hard head alone one lot of
a large hard head alone at the
corner - put in the place of the
lot of hard head alone a large hard
head alone 17 x 12 x 10 & surrounded
it with 4 large hard head stones and
several small ones

The above is a record and plat
of a survey made by me on section 7
Center Sept. 2nd & 28th - 1876

Edward Puger
County Surveyor

COUNTY SURVEYOR
RECORD 2 1869-1900