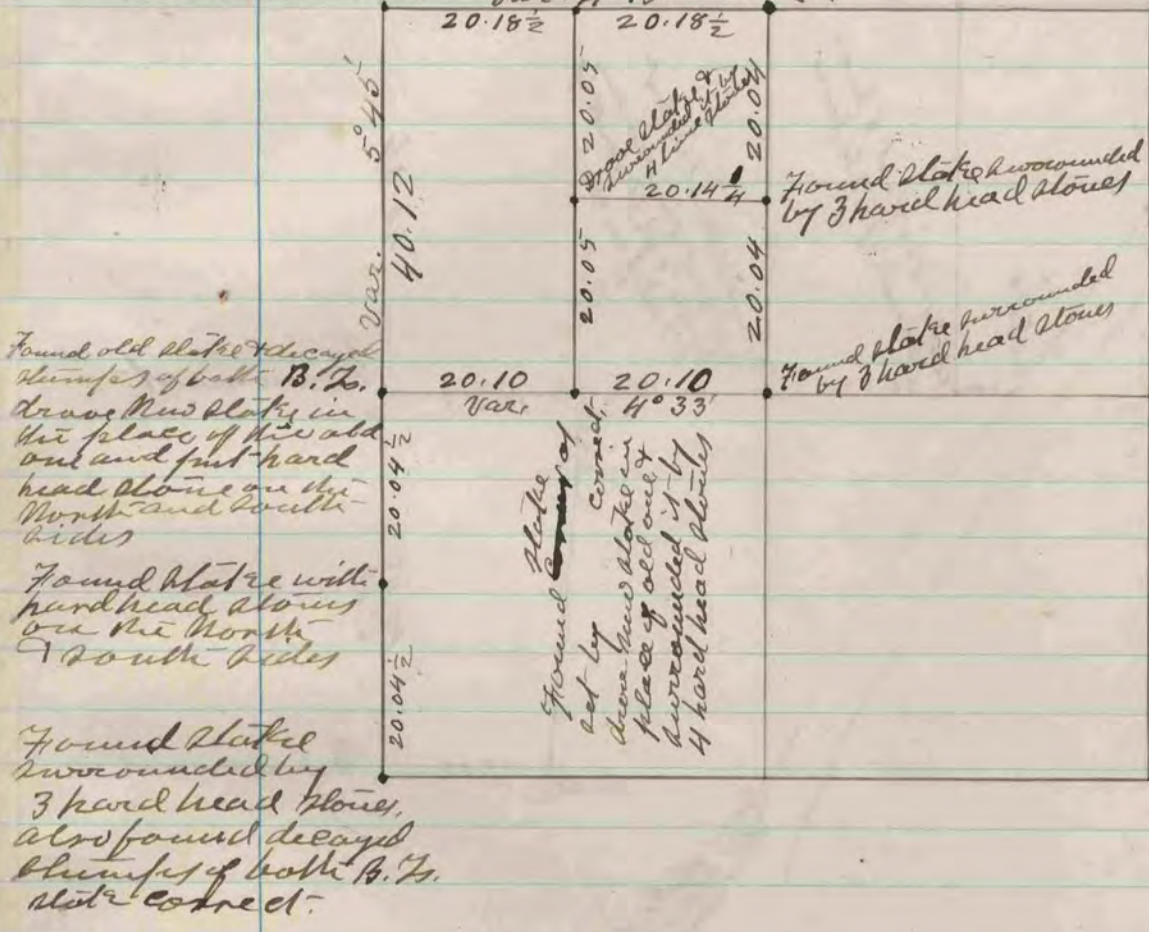


Found stump of M. E. B. J. & remains of old slate - stump of G. W. B. V. work out - Ref. line 24 X 9 X  
 Found slate & surrounded it by 3 hard head stones and one lime stone  
 Found old slate and stumps of both B. J. & G. W. B. V. slate correct - Stone New slate in the place of the old one and surrounded it by 4 hard head stones



The above is a record and plot of a survey made by me on section 24 from the August 29 & 30 1876

Edward Reger  
 County Surveyor