

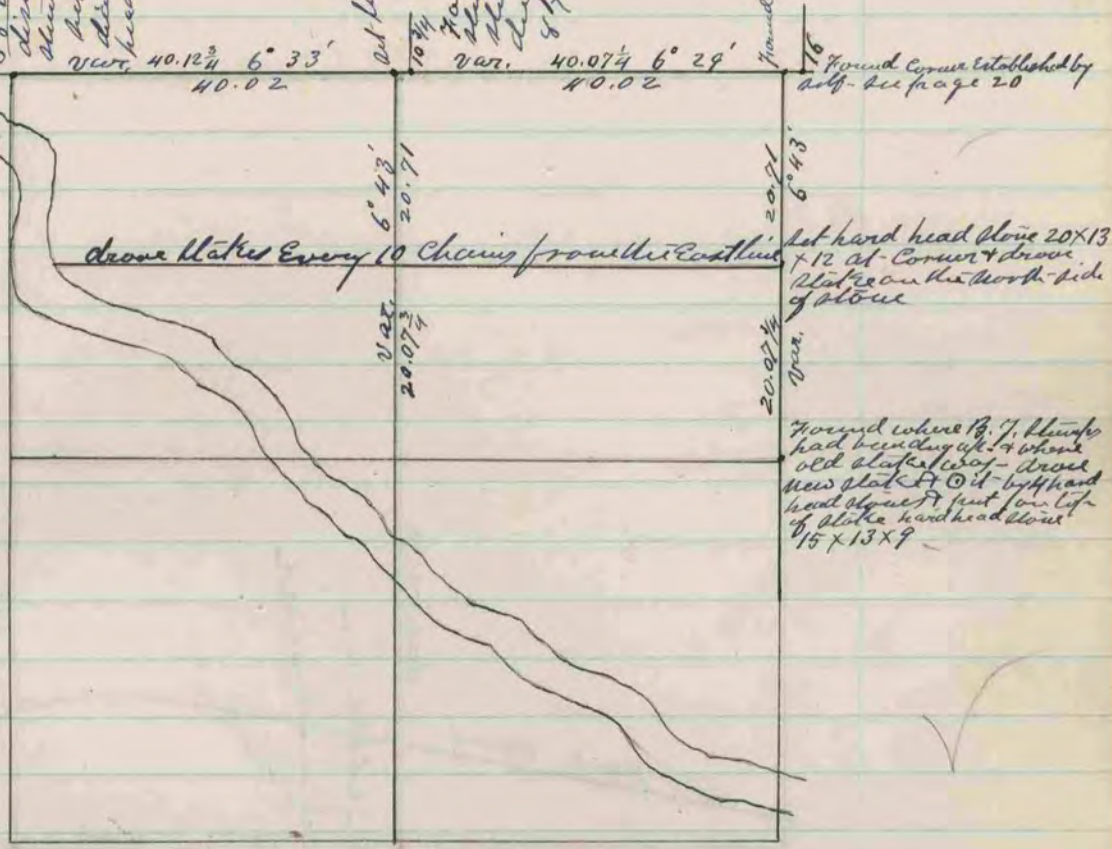
Found M.W. P. J. the
corner in water - 75
above high water on line
East of the true corner

Found stump of S. E. P. J. where
S. W. P. J. had been, about
S. 80° W. & distance of M. E. P. J.
distance is 98 links & when
stump of M. W. P. J. had been
set - large stake 7 inches in
diameter & it with 4 hard
head stakes

Set line stone 13 x 12 x 9

Found remains of old stake
stump of M. W. P. J. & where
stump of M. E. P. J. had been
8 x 2

Found corner established by self - see page 20



The above is a record and plot of a
survey made by me on sections 5 & 6 Juneville
May 29 & 30 - 1876
Edward Rieger
County Surveyor

COUNTY SURVEYOR
RECORD 2 1869-1900