

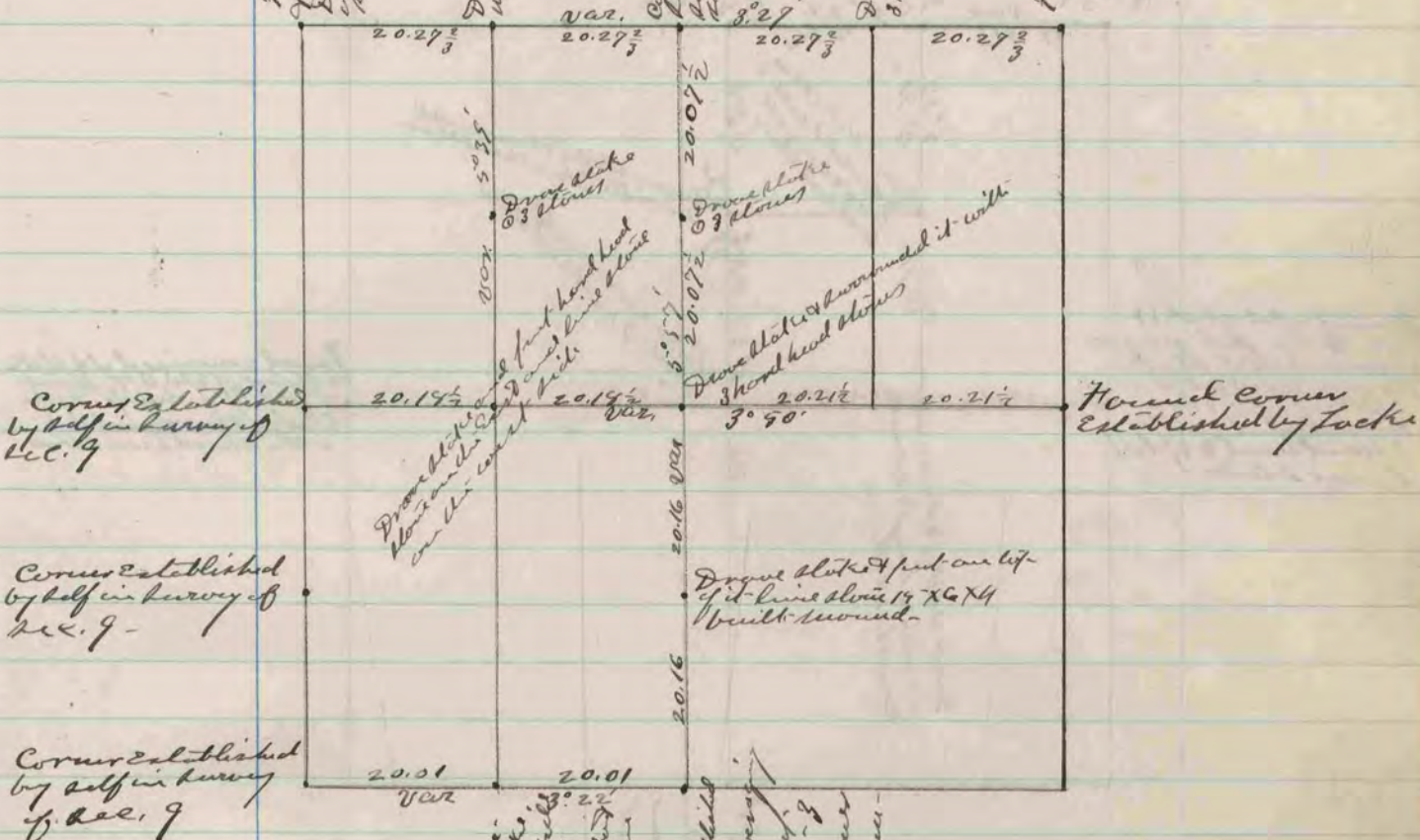
Found old plate. Also M. E. B. J.  
of blimps of the Wier v. B. Co.  
Drove plate and 3 stones into the  
cell and surrounded it with  
3 round stones.

Drove plate and surrounded it  
with 3 round stones

Corner lost. Established it from the  
to clear survey. Drove plate and  
surrounded it with 3 round stones and  
3 head stones. Took many pics. Cut  
3 in. of 1/2 in. 20.07  
Pl. 10.10.55. W 2.3 } var. 8.75  
" " " 10.55. W 2.2 } var. 8.75

Drove plate and surrounded it with  
3 round stones

Found corner established by Locke



Corner Established by self in survey of Dec. 9

Corner established by self in survey of Dec. 9

Corner established by self in survey of Dec. 9

Drove plate and 3 stones  
Drove plate and 3 head stones  
Drove plate and 4 feet one left of it line stone 14 X 6 X 4 built around

Found corner established by Locke

Drove about plate. Found along the plate 1/2 in line with west side of kitchen tree in hill north of road and about 10 feet south of house on north side of road  
Found blimps of M. E. B. J. designed somewhat. Established corner from them by survey and surrounded with 3 head stones. Corner 1/2 in line with base or corner many feet.

The above is a record and plot of a survey of made by me in section 10 town June 25, 26 & 27, 1974

Edward Burger  
County Surveyor

COUNTY SURVEYOR  
RECORD 2 1869-1900