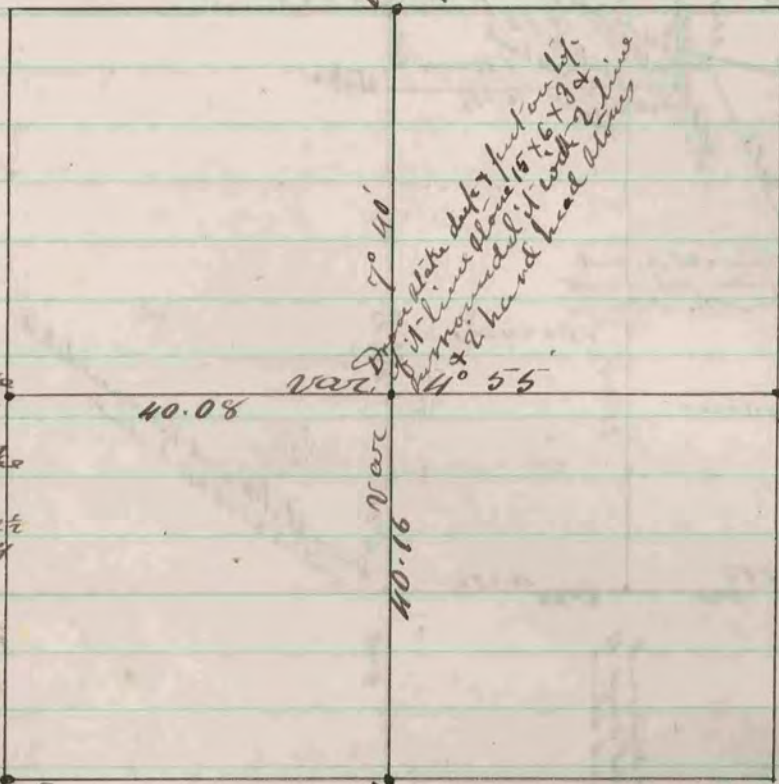


The above is a record and plot of a survey made by me on sections 9 & 16 Bradford June 2 - 1874
Edward Ruyter
County Surveyor

Found Corners Estab.
by self in
Survey of Sec. 3 per
Page 59



Found old stone
& hard head stone
on east side of it
Drove new Cedar stake
in place of old stone
7 feet out of it
line stone 22 x 5 x 2 1/2
& surrounded it with 4
hard head stones

Found old stone
Drove in its place
new stone 7 feet
out of it
line stone, & surrounded
it by 4 hard head stones

Found Corners Estab.
by self in Survey of Sec.
15 See Book 1 Page

Found old stone & on
top of it hard head
stone 16 x 14 x 8. Drove
new stone in place of
old one & replaced
head stone

The above is a record and plot of
a survey made by self on section 10
Bradford June 1st 1874
Edward Reger
County Surveyor