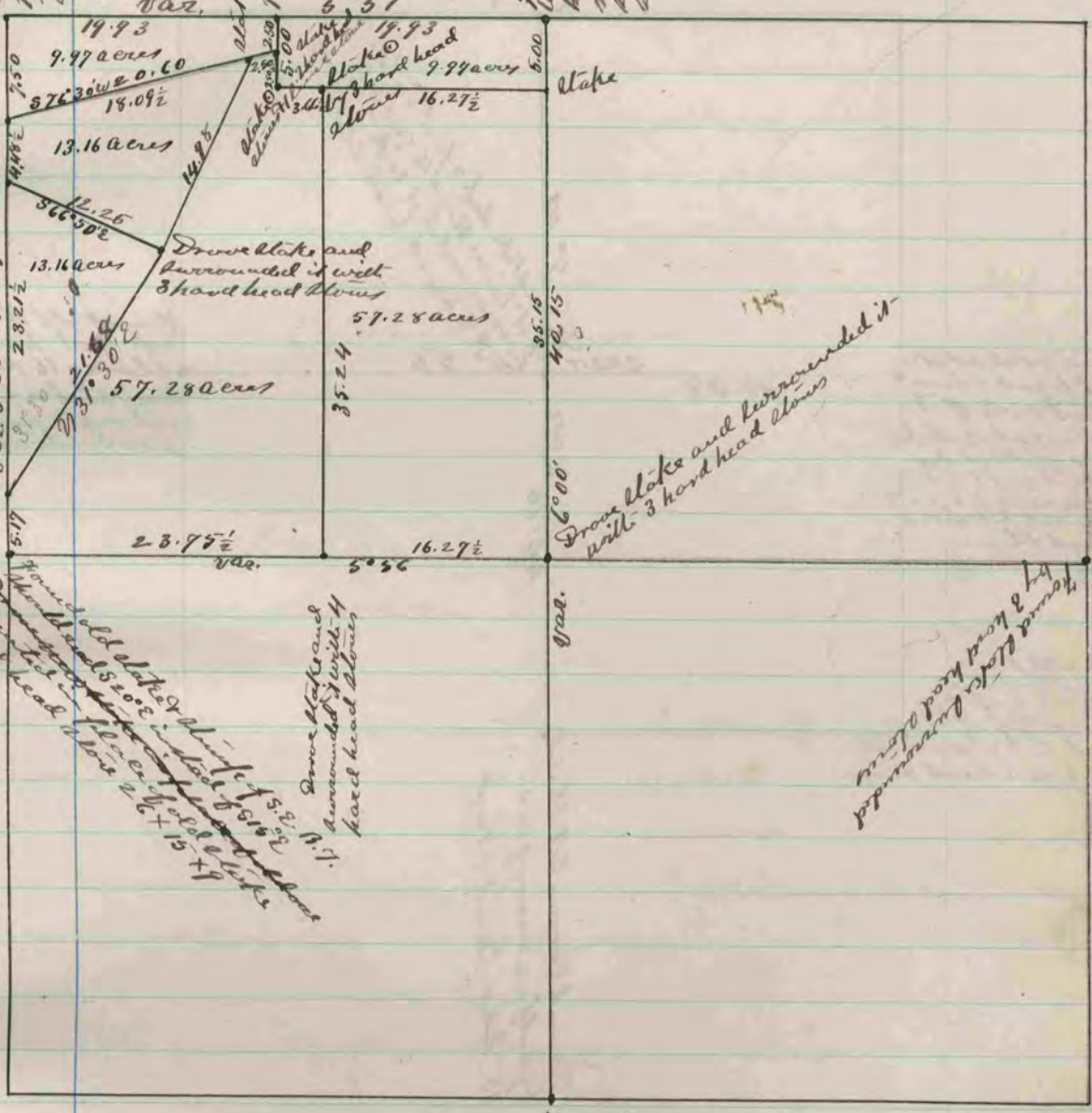


Found old lake & slumps
of B. H. Dove new lake in
place of old one and sur-
rounded it with 3 line
stones & 1 hard head stone

Found lake surrounded by stones
sites found where M. W. A. C. slumps
had been dug up - Dove new
lake in place of old one and
surrounded it with 2 line
stones & 2 hard head stones



Lake @ by 2
line 1 hard
& 1 head
stones

Lake @ 3 hard
head stones

Dove lake and
surrounded it
with 3 hard head
stones

Found old lake & slumps of
B. H. Dove new lake in
place of old one and sur-
rounded it with 3 hard head
stones

The above is a record and plat of a survey
made by our section 11 Springfield May
28. 29 & 30 - 1874
Edward Ruge
County Surveyor