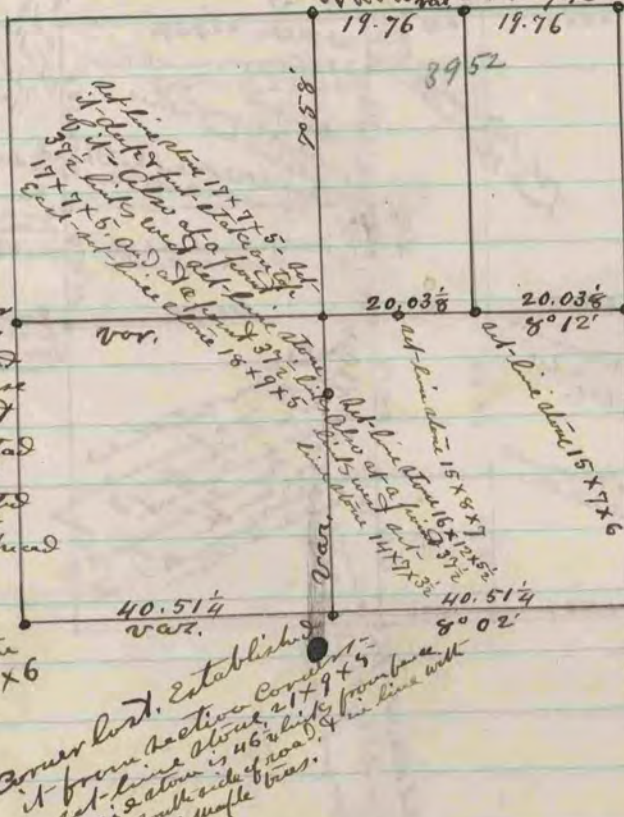


40.50
39.52
98
81.00
39.52
41.48
39.52
1.96



Found fence post at corner
Also found stump of M.E.
bearing tree. Also found
stump in the right corner
or East bearing tree, but
it is 2.26 distant, instead
of 1.70 as given in field
notes. Set irregular pointed
stone 19x17x11 1/4
surrounded it with 4 hand head
stones.

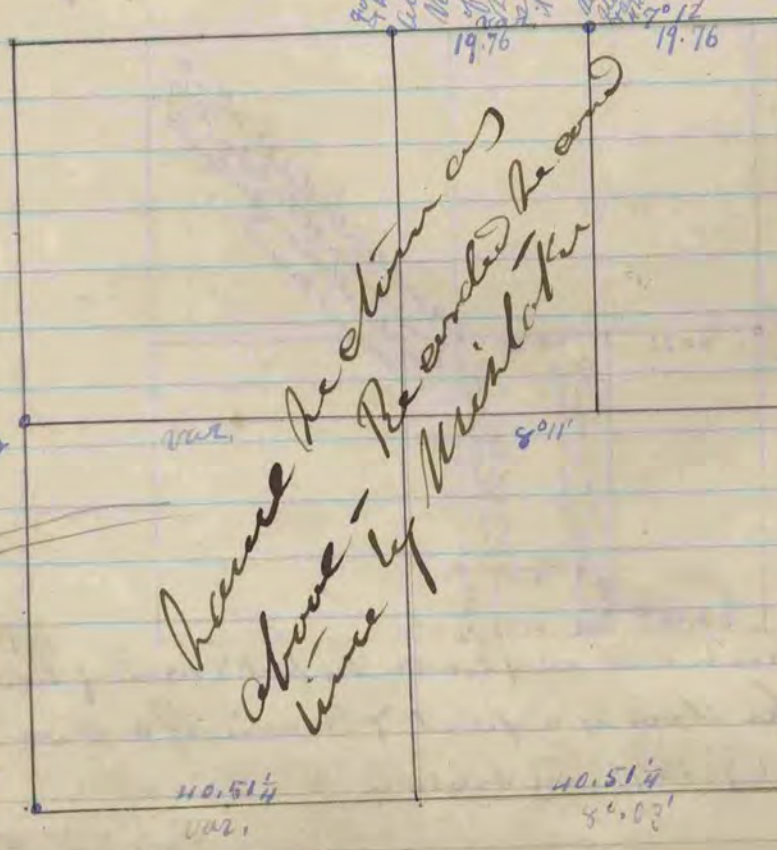
Found S.E. bearing tree
stump of S.W. bearing tree
Set line stone 22 1/4 x 6

Found old stake at corner.
Also found stump of M.W.
bearing tree. Set hand head
stone 16x9x7 1/2 surrounded it
with 4 hand head stones.

Found stump of South-East
bearing tree when stump of North
East bearing tree had been dug up.
Set hand head stone 12x7x5 1/4
surrounded it with 8 hand head
stones.

The above is a record and plot of a survey made by
me, March 31 and April 1 & 3, 1971, on Section
8 Fulton

Edward Ringer
County Surveyor



Found fence post at corner
Also found stump of
M.E. B. 7. Set
irregular hand
stone 19x17x11 1/4
surrounded it
with 4 hand head
stones.

Found old stake at corner
Also found stump of M.W.
bearing tree. Set
hand stone 16x9x7 1/2
surrounded it with
4 hand head stones.

Found old stake at corner
Also found stump of M.W.
bearing tree. Set
hand stone 16x9x7 1/2
surrounded it with
4 hand head stones.

Found stump of S.W. B. 7.
Set hand stone 17x9x5
surrounded it with
4 hand head stones.

Since Section 8 is
above - Be ended here
since by mistake