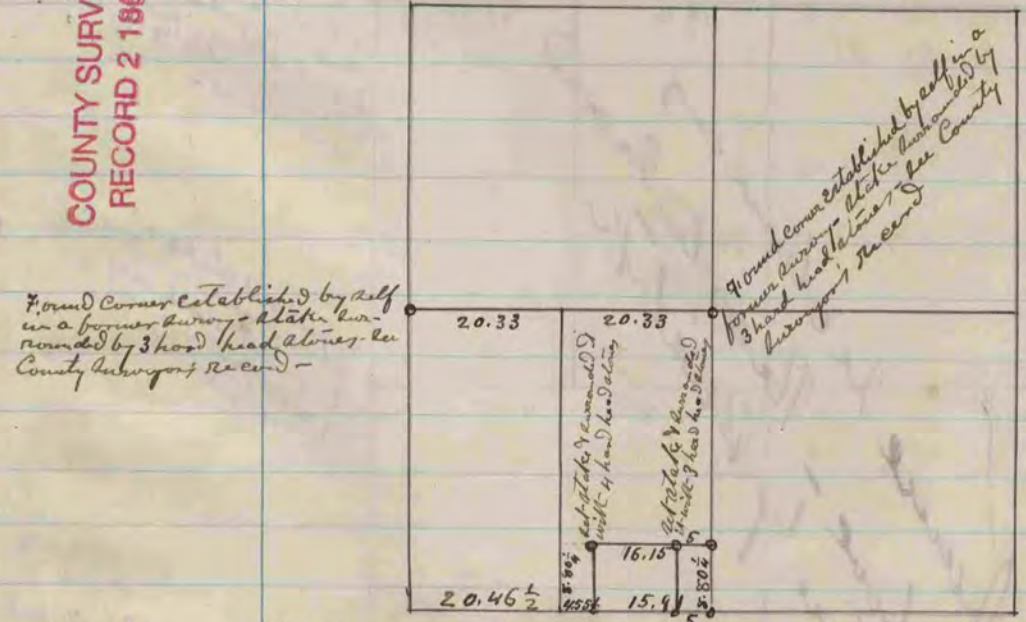


The above is a plat and record of a survey made by me, March 25 & 27 1871, on section 27 Lima Edward Ringer County Surveyor

COUNTY SURVEYOR RECORD 2 1869-1900



For corners on the south side of sec. 22. see plat & record of sec. 27 above
 The above is a plat & record of a survey made by me, March 27, 1871, on section 22 Lima Edward Ringer County Surveyor