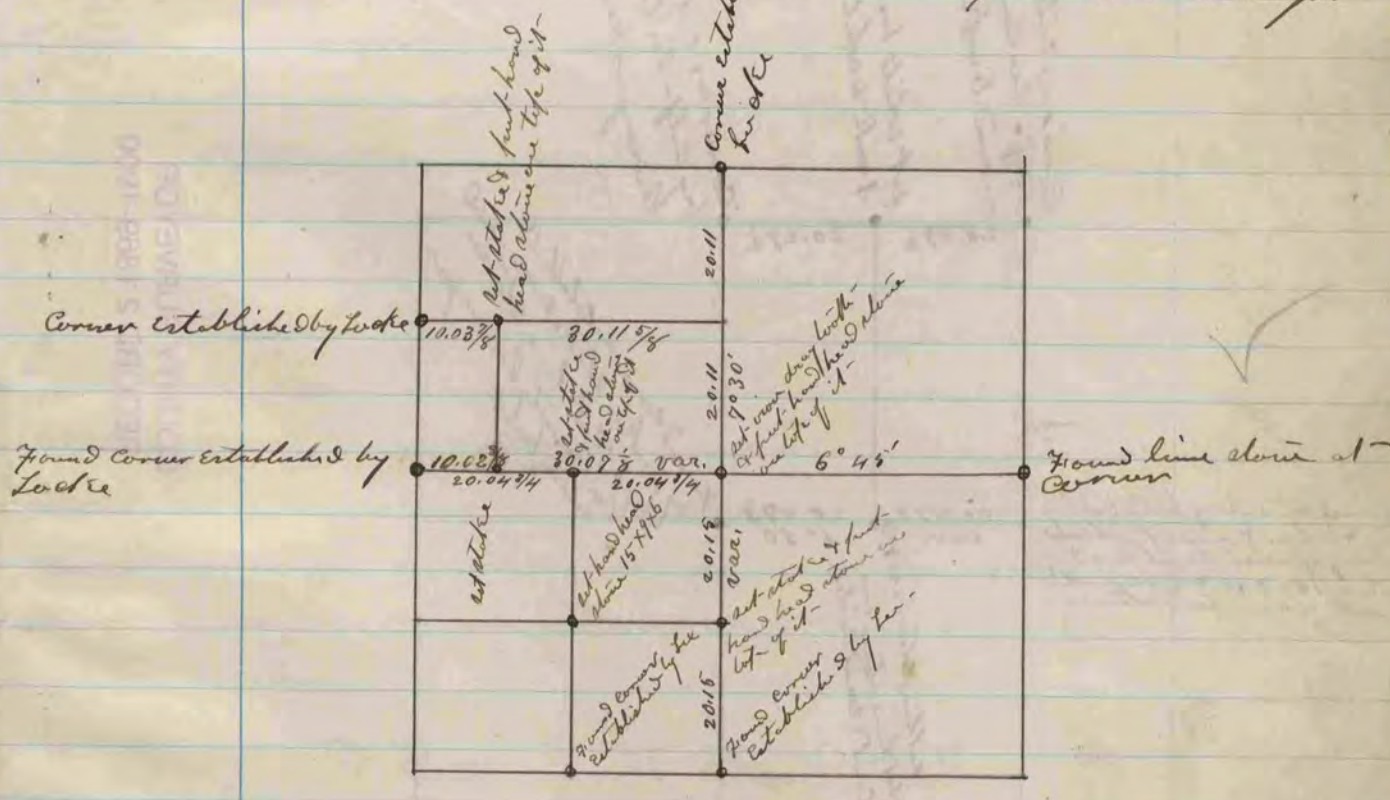


Found stone at corner also found S.W. bearing tree & stump of S.E. bearing tree

Found stone at corner also found N.E. bearing tree & stump of S.W. bearing tree - at stake & surrounded it with 3 head heads & 1 lime stone

The above is a plot and record of a survey made by me, Dec. 26 & 27, 1870 - on Section 3 Johnston

Edward Pinger
Deft. Co. Surveyor



The above is a plot & record of a survey made by me June 12 & 13, 1871, on Section 15 Magnolia

Edward Pinger
County Surveyor