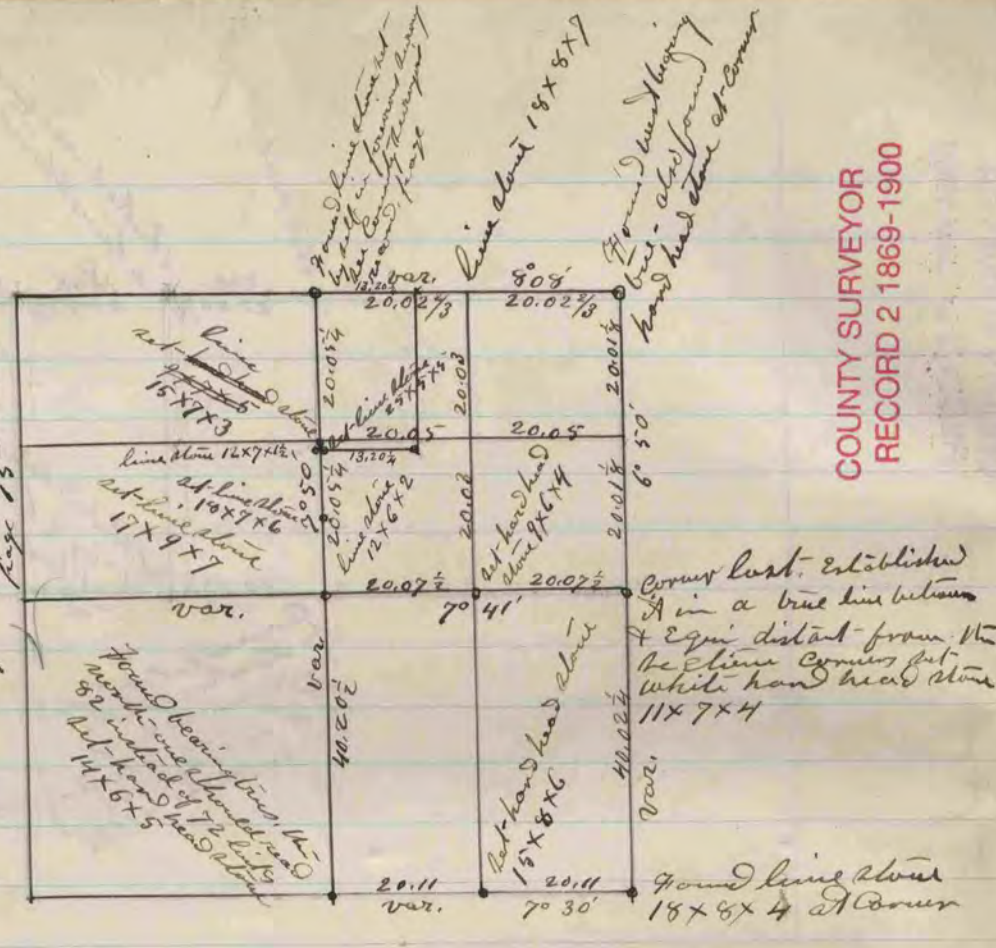


16  
 W. Lawrence S.W. Corner of the 12x7x1 1/2 - lot - the S.W. Corner of the 1/2 of M.E. 1/4 of Sec. 11 Jamesville Act - line about 15x7x3 - at the point where the N.E. 1/4 line of said section intersects the line of the lot - line about 2 1/2 x 3 1/2 - Lawrence S.W. Corner, is 2 1/2 x 3 1/2 -

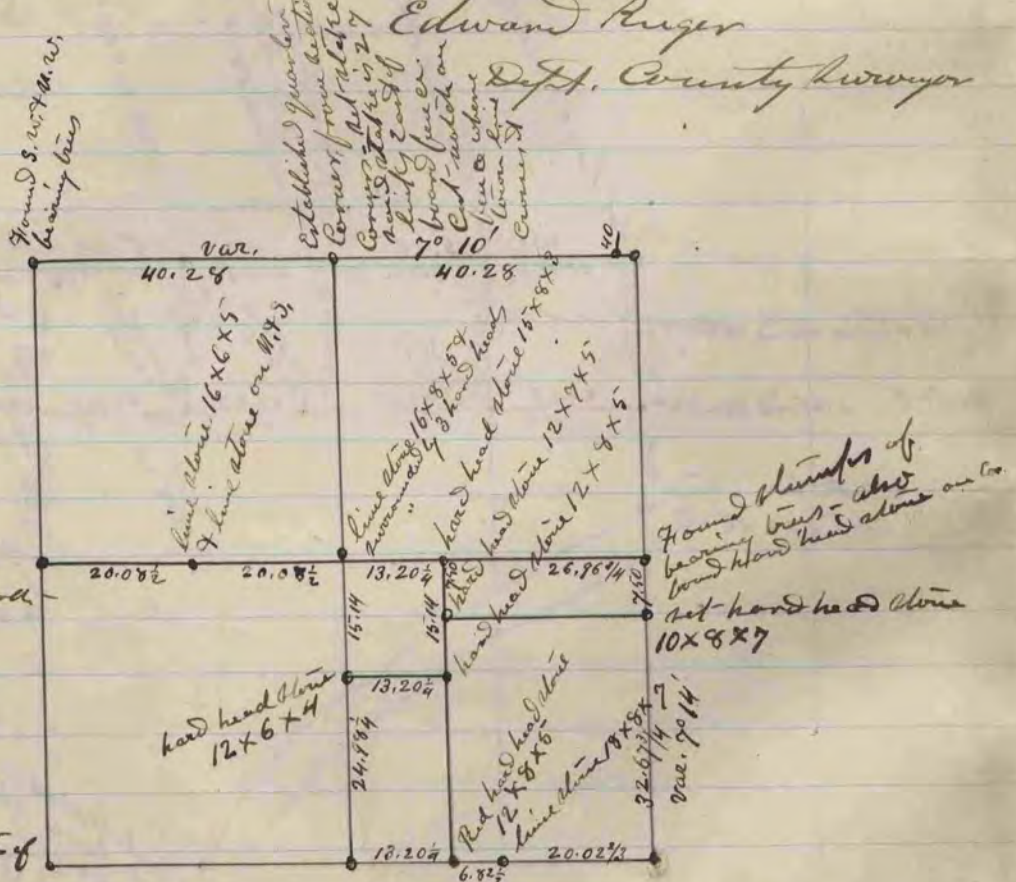


COUNTY SURVEYOR  
 RECORD 2 1869-1900

The above is a plat and record of a survey made by me November 16, & February 11, 1870, on Section 11 of Jamesville -

Edward Rugey  
 Deft. County Surveyor

Found S. W. 1/4 M. W. bearing true



Found S. W. 1/4 M. W. bearing true

The above is a plat and record of a survey made by me on Section 11 of Jamesville, Feb. 23 & 24 - 1870  
 Edward Rugey  
 Deft. Co. Surveyor

Found hand heard stone in center of road