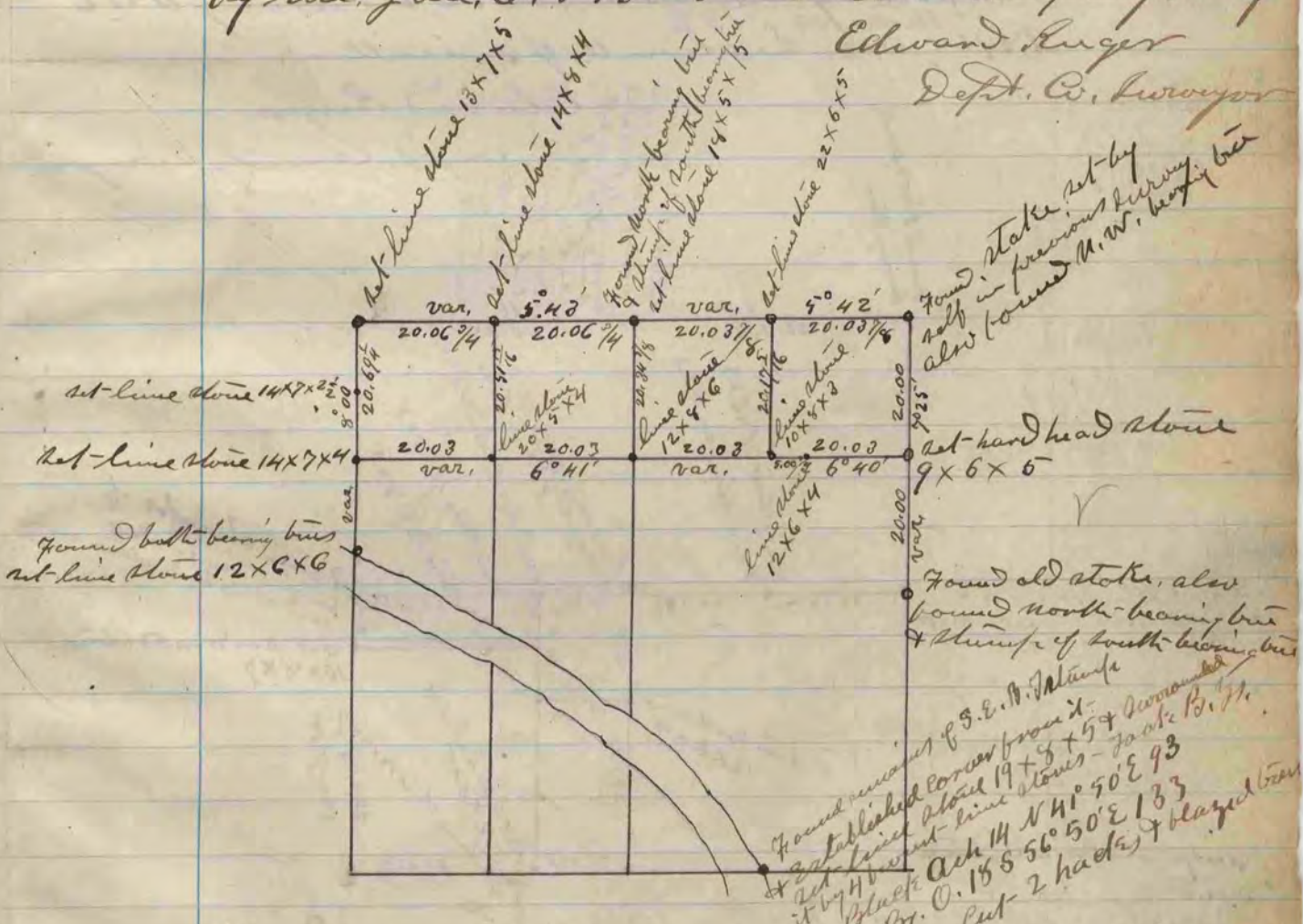


The above is a plot and record of a survey made by me, Jan. 6, 1870 on Section 12 Spring Valley Edward Ruzer Dept. Co. Surveyor



The above is a plot & record of a survey made by me Jan. 26 & 27 & Feb. 12, 1870 on Section 10 Jan. 26, 1870 Edward Ruzer Dept. Co. Surveyor

The Menden Corner on east bank & south line of Section was established August 2^d 1876 E. Ruzer Co. Surveyor