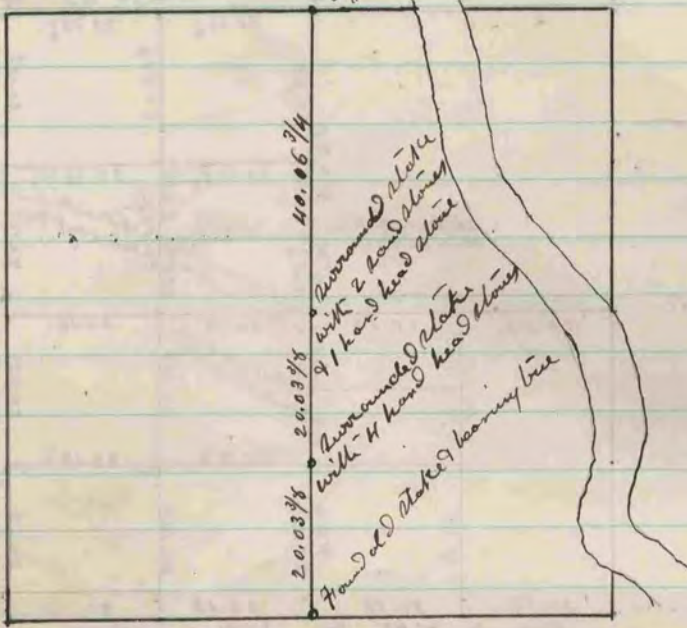
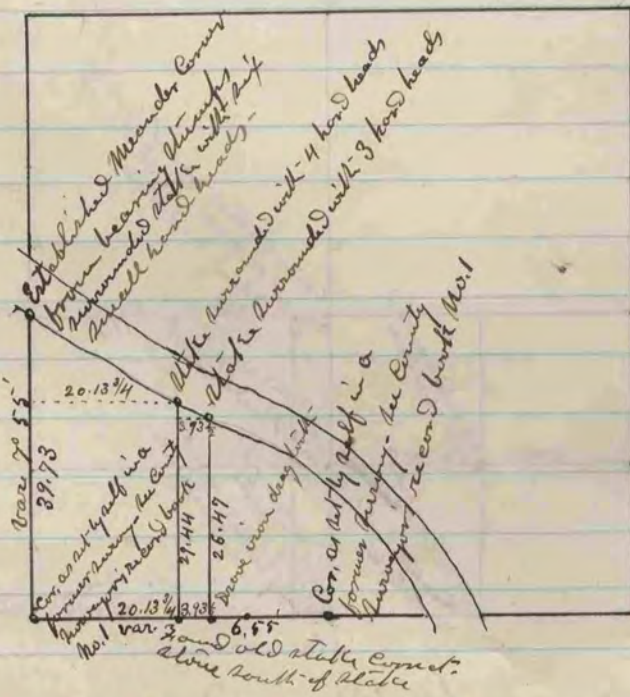


Corr. established by act in  
a former survey in Co. of  
Surveyor's record 1 and 2



The above is a plot and record of a survey made by me  
Oct. 15<sup>th</sup> 1869, on section 15 Janesville. The survey  
was made to ascertain the north & south quarter  
line. I ran a true line from the south quarter  
corner to the north quarter corner - using the transit  
in making the survey -

Edward Ruzer  
Deft. Co. Surveyor -



The above is a plot and record of a survey made by me Oct.  
16<sup>th</sup> 1869, on section 10 Janesville

Edward Ruzer  
Deft. Co. Surveyor -