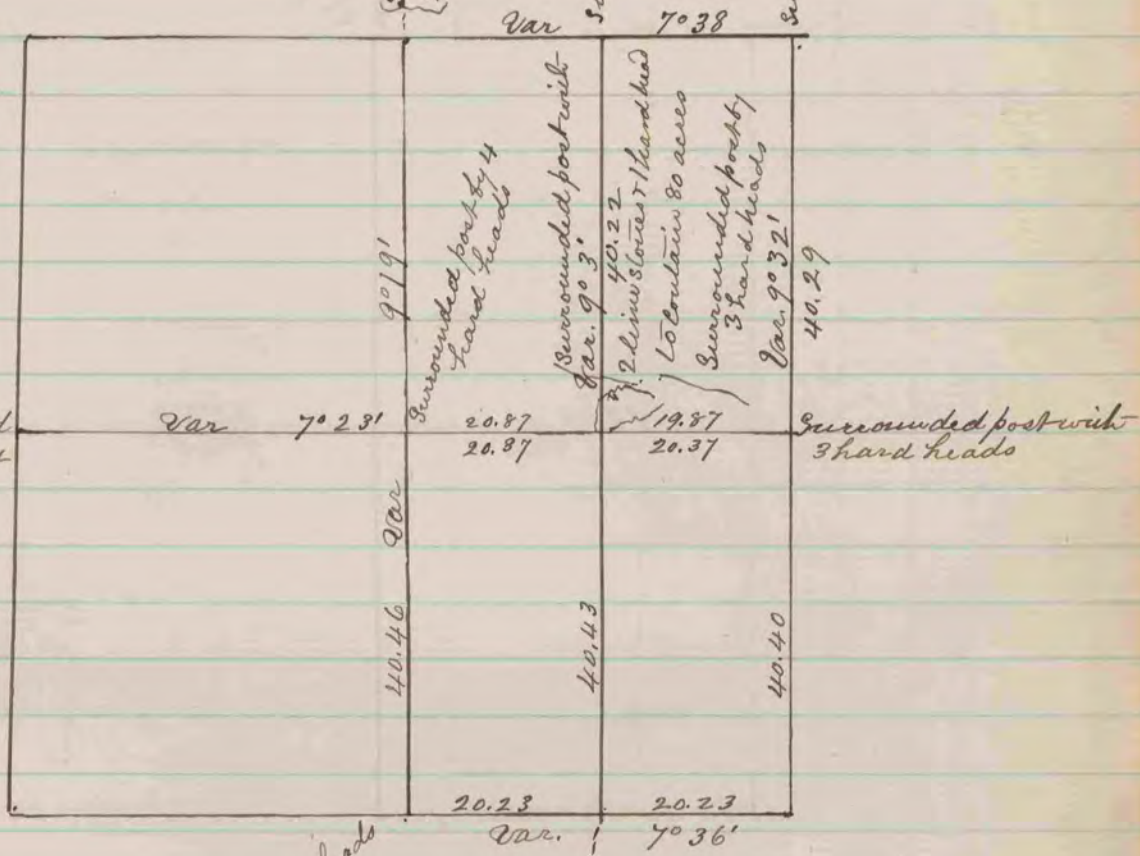


Planted 1 large hard head on E. side of post



Surrounded post with 2 hard heads
 & lines stakes & trees
 Burr Oak 165 58° 37' 92 227
 " " 105 42° 6' 150
 Var. 7° 35'

Surrounded post with 3 hard heads
 & lines stakes & trees
 Burr Oak 155 41° 15' 6" 78 314
 " " 155 7° 15' 14" 85 714
 Var. 7° 35'

A Record of a Survey made on Sec. 31, T. 3, R. 12.
 Jamesville Surveyed August 29 1859
 by Edward Ringer Co. Surveyor
 Rock Co. Wis.

(Recorded Vol I page 110)

RECORDED
 COUNTY SURVEYOR
 RECORD 1859-1869

COUNTY SURVEYOR
 RECORD 1859-1906