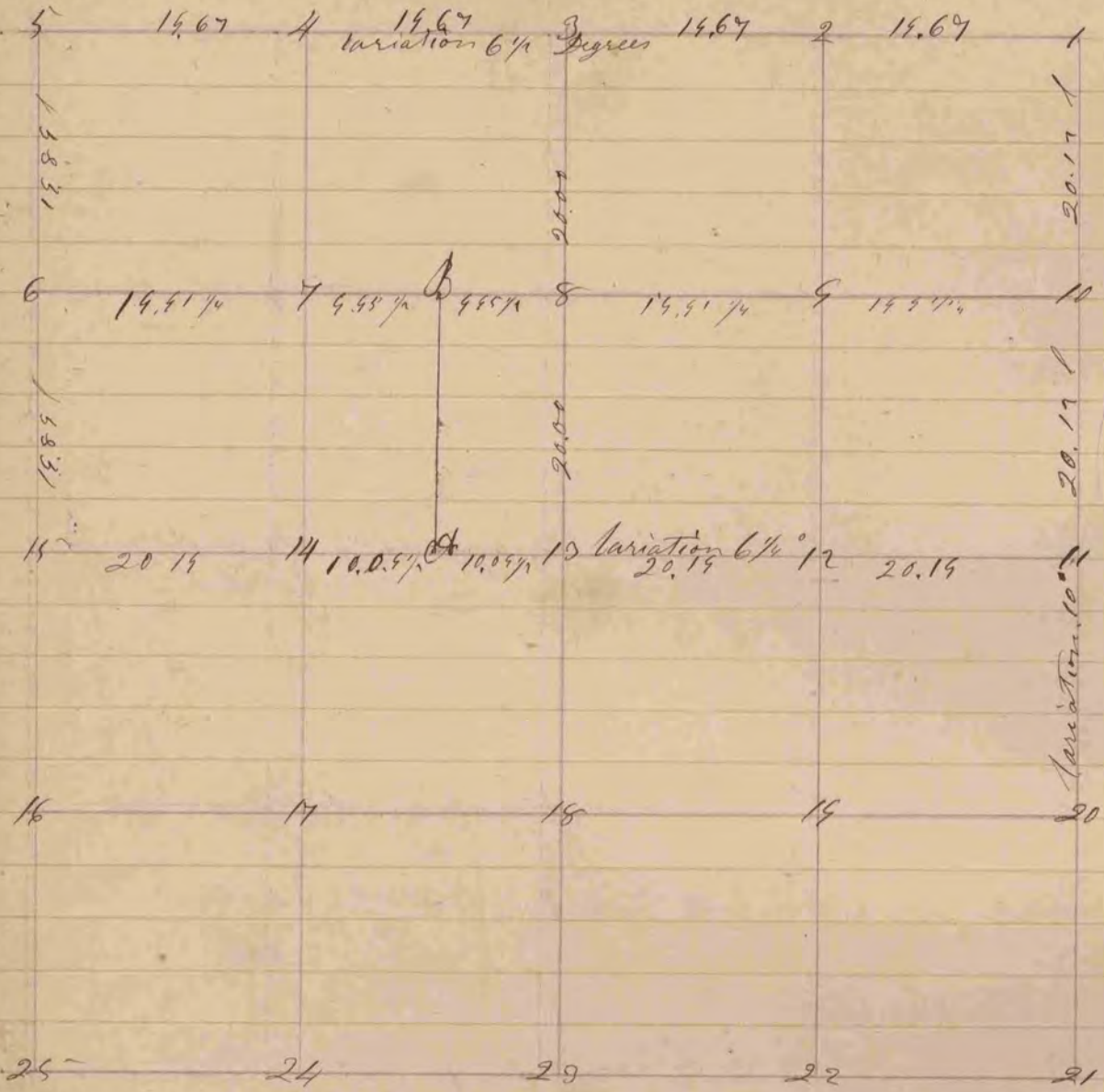


74 A Record & plat of a survey made on Sec Sixteen
Town two Range ten East



- Fig 3 Br 0 14 S 4 1/2 E 511' Fig 6 Br 0 12 N 24 E 206'
 " 4 N 9 1/2 W 350' " 10 N 16 1/2 E 203'
 " 7 " 12 S 12 E 670' Letter A Br 0 10 S 26 1/2 W 126'
 " 14 S 6 1/2 E 675' " Stump S 172'
 " 8 " 12 S 8 1/2 E 355 1/2' " B G.O. 10 N 13 E 8.15'
 " " S 5 1/2 E 241' " 12 N 51 1/4 E 3.54'
 " 9 " 10 S 10 W 240'
 " 12 " 12 S 13 1/2 W 291'
 " 12 " 10 N 5 1/2 W 60'
 " Stump N 5 1/2 E 40'
 " 13 G.O. 11 S 7 1/2 E 261'
 " Br 0 6 N 68 1/2 E 150'

14 Stake No bearings

The above survey was made April 3rd 1854
 Joseph Church by Charles H Brown Deputy
 County Surveyor Rock County
 1854