

record of a survey made for Stapleton Welch and others
on Section nine in the Town of Aron

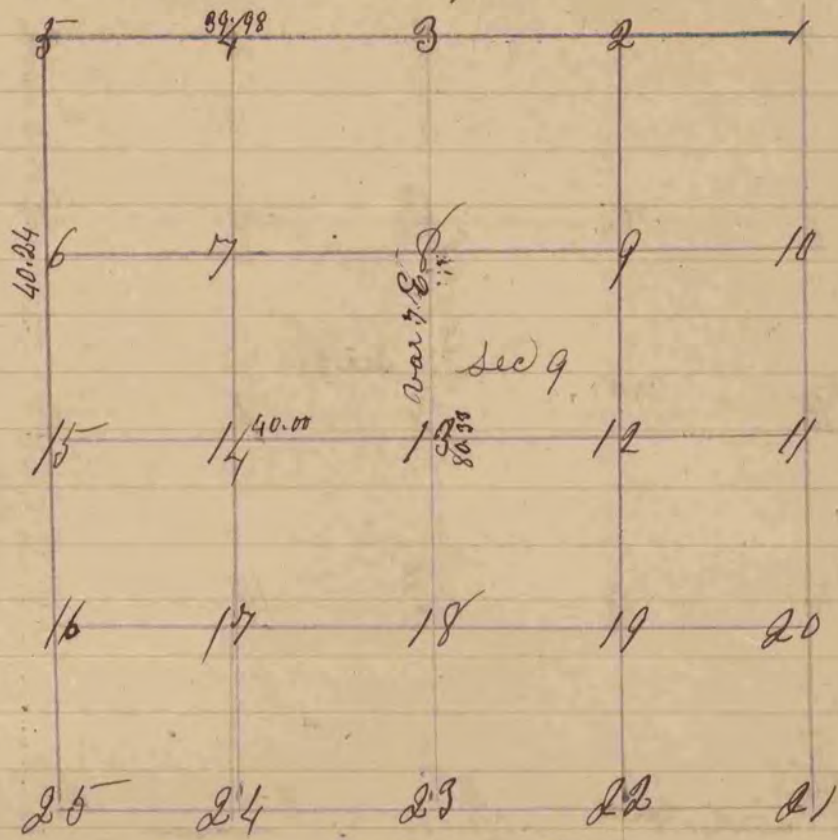


figure 13 represents the centre of the section

- fig 13 Bl 0 14 N 8 W, 63 Also Bl 0 12 N 77 1/2 E 61 links
- " 14 Bl 0 10 N 72 W 143. Also Bl 0 6 N 83 E 117 links
- " 8 Bl 0 11 N 70 W 134 Also Bl 0 22 S 50 E 117 links
- " 4 Bl 0 28 S 2 1/2 W 111 Also Bl 0 10 N 47 1/2 E 45 links

The above survey was made in June 1851

Peter M. Bean County Surveyor

COUNTY SURVEYOR
RECORD 1 1851-1869