

Township N<sup>o</sup> 1 N, Range N<sup>o</sup> 12 E, 4<sup>th</sup> Mer.

W 1800



Readers of River

| Posts | Courses | Ch <sup>ks</sup> | Posts | Courses | Ch <sup>ks</sup> |
|-------|---------|------------------|-------|---------|------------------|
| 1.    | 124.6   | 12.10            | 124.6 | 7.10    | 7.10             |
|       | 124.6   | 7.10             | 124.6 | 7.50    | 7.50             |
|       | 124.6   | 5.00             | 124.6 | 11.50   | 11.50            |
|       | 124.6   | 13.00            | 124.6 | 11.00   | 11.00            |
|       | 124.6   | 5.50             | 124.6 | 10.16   | 10.16            |
|       | 124.6   | 5.50             |       |         |                  |
|       | 124.6   | 12.50            |       |         |                  |
|       | 124.6   | 12.50            |       |         |                  |
|       | 124.6   | 15.00            |       |         |                  |
|       | 124.6   | 4.24             |       |         |                  |
| 2.    | 124.6   | 11.00            |       |         |                  |
|       | 124.6   | 5.00             |       |         |                  |
|       | 124.6   | 6.50             |       |         |                  |
|       | 124.6   | 5.50             |       |         |                  |
|       | 124.6   | 7.00             |       |         |                  |
|       | 124.6   | 5.50             |       |         |                  |
|       | 124.6   | 5.00             |       |         |                  |
|       | 124.6   | 7.00             |       |         |                  |
|       | 124.6   | 6.00             |       |         |                  |
|       | 124.6   | 10.00            |       |         |                  |
|       | 124.6   | 7.50             |       |         |                  |
|       | 124.6   | 11.50            |       |         |                  |
|       | 124.6   | 3.67             |       |         |                  |
| 3.    | 124.6   | 5.00             |       |         |                  |
|       | 124.6   | 17.50            |       |         |                  |
|       | 124.6   | 10.00            |       |         |                  |
|       | 124.6   | 5.00             |       |         |                  |
|       | 124.6   | 11.50            |       |         |                  |
|       | 124.6   | 3.00             |       |         |                  |
|       | 124.6   | 16.50            |       |         |                  |
|       | 124.6   | 8.00             |       |         |                  |
|       | 124.6   | 4.89             |       |         |                  |
| 4.    | 124.6   | 15.00            |       |         |                  |
|       | 124.6   | 15.50            |       |         |                  |
|       | 124.6   | 14.50            |       |         |                  |
|       | 124.6   | 11.00            |       |         |                  |
|       | 124.6   | 10.50            |       |         |                  |
|       | 124.6   | 5.00             |       |         |                  |
|       | 124.6   | 4.10             |       |         |                  |
|       | 124.6   | 3.00             |       |         |                  |
|       | 124.6   | 3.74             |       |         |                  |
| 5.    | 124.6   | 5.50             |       |         |                  |
|       | 124.6   | 10.00            |       |         |                  |
|       | 124.6   | 10.00            |       |         |                  |
|       | 124.6   | 8.50             |       |         |                  |
|       | 124.6   | 4.50             |       |         |                  |
|       | 124.6   | 7.75             |       |         |                  |
|       | 124.6   | 7.10             |       |         |                  |
|       | 124.6   | 9.00             |       |         |                  |
|       | 124.6   | 23.20            |       |         |                  |
| 6.    | 124.6   | 12.50            |       |         |                  |
|       | 124.6   | 9.00             |       |         |                  |
|       | 124.6   | 12.00            |       |         |                  |
|       | 124.6   | 8.50             |       |         |                  |
|       | 124.6   | 8.00             |       |         |                  |
|       | 124.6   | 8.00             |       |         |                  |
|       | 124.6   | 5.50             |       |         |                  |
|       | 124.6   | 10.50            |       |         |                  |
|       | 124.6   | 5.50             |       |         |                  |
| 7.    | 124.6   | 8.50             |       |         |                  |
|       | 124.6   | 11.00            |       |         |                  |

See S. G. letter  
Nov 10, 1835  
S. Boundary  
W. & E.

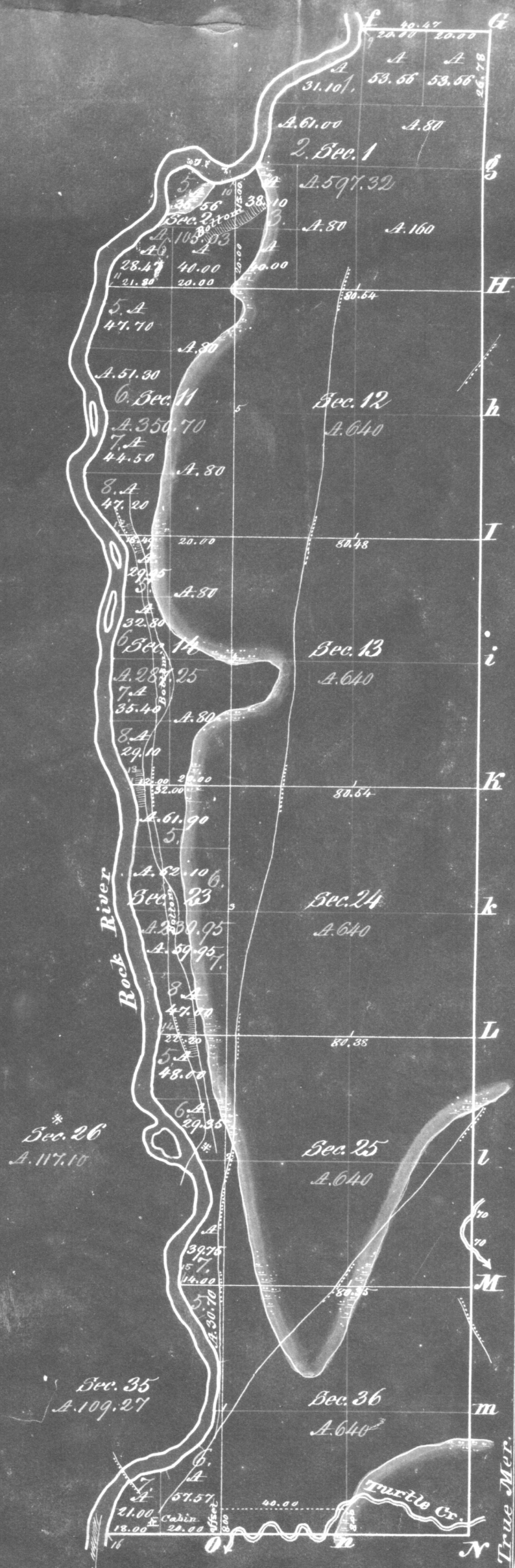
| Surveys Designated | By Whom Surveyed | Date of Contract | Amount of Surveys                                | When Surveyed         | When first and second in the Sur. Gen's office |
|--------------------|------------------|------------------|--|-----------------------|--|
| Subdivision        | G. W. Morrison   | 15 Nov. 1833     | M. Ch <sup>ks</sup> Lk <sup>s</sup><br>55.07 .15 | 11 <sup>th</sup> 1834 | 3 <sup>rd</sup> 1834                           |
| Township lines     | Walter           | 9 July, 1833     | 11.33.50   | 3 <sup>rd</sup> 1833  | 3 <sup>rd</sup> 1834                           |

Total number of Acres 17,871.00  
The above Map of Township N<sup>o</sup> 1, — of Range N<sup>o</sup> 12 East of 4<sup>th</sup> Principal Meridian (N. 4<sup>th</sup> Sec.) is strictly conformable to the field notes of the survey thereof on file in this Office, which have been examined and approved.  
Surveyor General's Office  
Cincinnati, July 21<sup>st</sup> 1835  
B. S. M. by the Sur. Gen.

Belant



Township N<sup>o</sup> 1, Range N<sup>o</sup> 12 E. 4<sup>th</sup> Mer. (Wis. Ter.)



Meanders of Rock River.

| Dist | Course     | Area  |
|------|------------|-------|
| 9    | S 57 1/2 W | 12.80 |
|      | S 53 W     | 13.50 |
|      | S 79 W     | 9.00  |
|      | S 39 W     | 5.00  |
|      | S 1 E      | 15.00 |
|      | S 39 W     | 9.00  |
|      | S 64 W     | 4.49  |
| 10   | S 66 W     | 8.00  |
|      | N 61 W     | 14.00 |
|      | S 71 W     | 4.00  |
|      | S 14 W     | 5.00  |
|      | S 82 E     | 5.00  |
|      | S 8 W      | 6.50  |
|      | S 45 W     | 5.00  |
|      | S 27 W     | 7.00  |
|      | S 66 W     | 8.00  |
|      | S 25 W     | 7.50  |
|      | S 34 W     | .51   |
| 11   | S 84 W     | 9.80  |
|      | S 21 W     | 12.00 |
|      | S 2 W      | 9.00  |
|      | S 24 E     | 4.00  |
|      | S 46 E     | 8.00  |
|      | S 3 E      | 8.00  |
|      | S 29 W     | 10.00 |
|      | S 30 W     | 5.00  |
|      | S 21 W     | 4.50  |
|      | S 23 E     | 6.00  |
|      | S 61 E     | 10.00 |
|      | S 26 E     | 5.00  |
|      | S 24 E     | 1.21  |
|      | S 20 E     | 6.00  |
| 12   | S 54 W     | 47.00 |
|      | S 9 E      | 15.00 |
|      | S 20 E     | 10.00 |
|      | S 13 E     | 1.78  |
| 13   | S 54 E     | 18.20 |
|      | S 4 W      | 19.00 |
|      | S 7 W      | 20.00 |
|      | S 25 E     | 20.00 |
|      | S 114 W    | 4.46  |
| 14   | S 29 1/2 W | 15.30 |
|      | S 19 E     | 2.50  |
|      | S 36 E     | 9.00  |
|      | S 43 E     | 14.00 |
|      | S 18 E     | 15.00 |
|      | S 15 W     | 16.00 |
|      | S 26 1/2 W | 11.00 |
|      | South      | 5.66  |
| 15   | S 79 1/2 E | 11.74 |
|      | S 23 E     | 15.00 |
|      | S 3 W      | 15.00 |
|      | S 7 W      | 13.00 |
|      | S 46 W     | 13.00 |
|      | S 61 W     | 20.00 |
|      | S 23 W     | 7.00  |
| 16   | S 33 1/2 W | 4.11  |

Morris 3573

22869.22

Total number of Acres 4,997.62

| Surveys designated | By whom surveyed | Date of Contract | Ant. of Survey | When surveyed | When first sold |
|--------------------|------------------|------------------|----------------|---------------|-----------------|
| Town Lines         | Mullett & Bird   | 17 Aug. 1835     | N. C. S.       | 4. of 1835    | 2. of 1836      |
| Subdivision        | Orson Lyon       | 7 Jan. 1836      | 20. of 1836    | 1. of 1836    | 3. of 1836      |

FOUR COPY

The above Map of Township N<sup>o</sup> 1, of Range N<sup>o</sup> 12 E. of 4<sup>th</sup> Principal Meridian (Wis. Ter.) is strictly conformable to the field notes of the Survey thereof on file in this Office, which have been examined and approved.  
 Surveyor General's Office,  
 Cincinnati, Jan. 19, 1843.  
 B. B. Lytle, Jr.