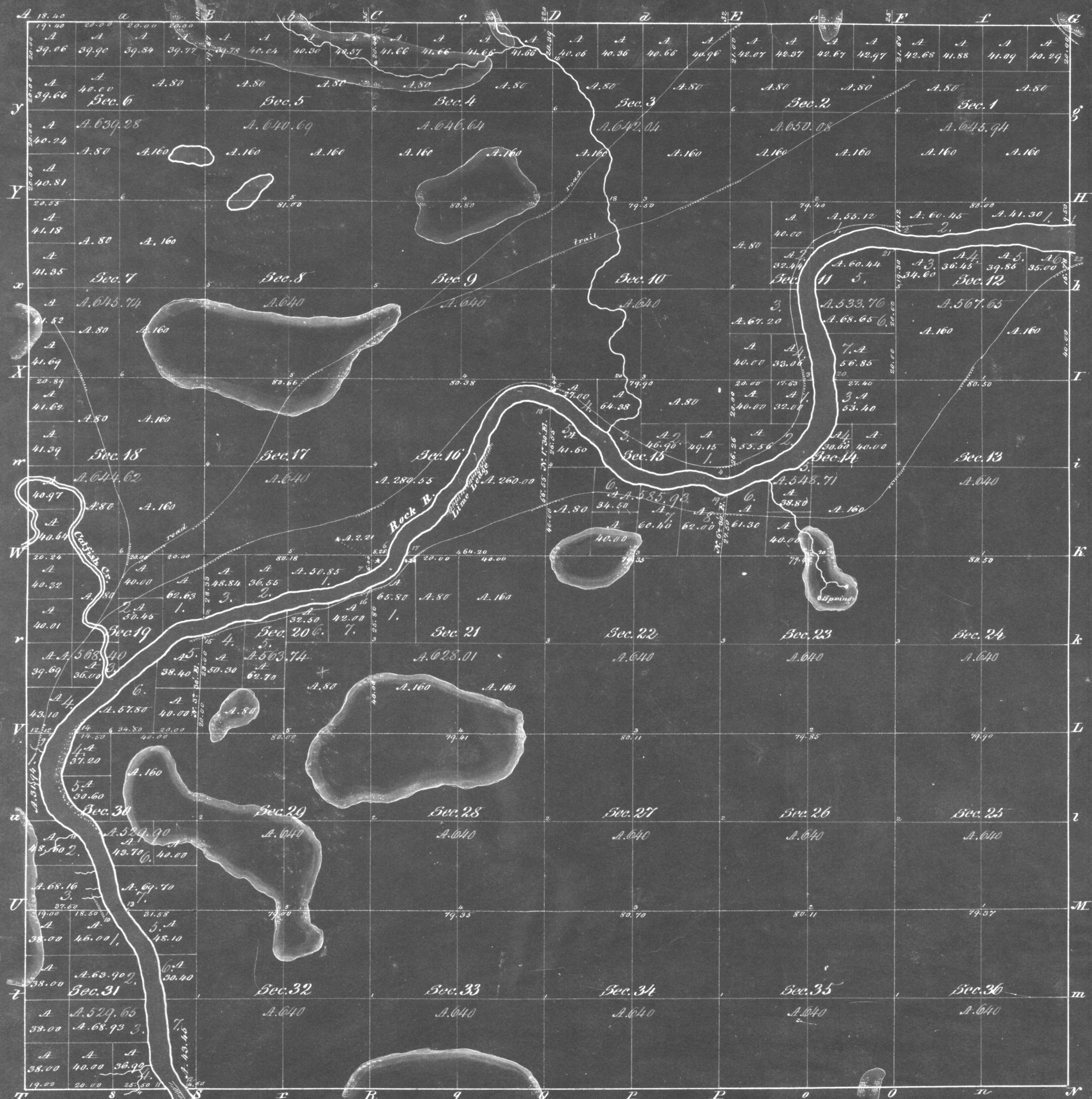


Township N<sup>o</sup> 4, Range N<sup>o</sup> 12 E. 4<sup>th</sup> Mer. (Wis. Ter.)



**WISCONSIN**  
Meanders of Rock River

Rate	Course	Dist.	Rate	Course	Dist.	Rate	Course	Dist.
1.	S 88° W	11.50	S 35° E	11.50	N 21° E	7.02		
	N 83° W	7.50	S 21° E	10.50	N 41° E	3.94		
	S 30 1/2° W	12.50	S 7° E	10.00	N 20 1/2° E	5.52		
	N 85° W	13.50	S 20 1/2° E	3.00	N 35° E	5.50		
	N 70° W	6.47	S 27° E	13.25	N 72 1/2° E	5.39		
	N 66° W	11.50			S 80 1/2° E	5.11		
2.			Left Riv. up Stream		S 70° E	5.69		
	S 66 1/2° W	14.50	N 24 1/2° W	3.50	S 77 1/2° E	2.34		
	S 59° W	19.00	N 18 1/2° W	2.09	N 75° E	0.83		
	S 52° W	12.50	N 20 1/2° W	13.14	S 57 1/2° E	7.29		
	S 43° W	6.50	N 4 1/2° W	28.59	S 51 1/2° E	1.78		
	S 6° E	11.00	N 13 1/2° W	10.43	S 34 1/2° E	2.21		
	S 10 1/2° E	14.50	N 19 1/2° W	9.39	S 48 1/2° E	1.95		
	S 16 1/2° E	13.00	N 33° W	14.66	S 46 1/2° E	2.99		
	S 10° W	17.50	N 26° W	3.91	S 49 1/2° E	10.16		
3.					S 6° E	4.67		
	S 26° W	16.50	N 23 1/2° W	6.52	S 32 1/2° E	2.94		
	S 61° W	24.50	N 10 1/2° W	3.61	S 51° E	9.92		
	S 51 1/2° W	5.50	N 19 1/2° W	26.71	S 55 1/2° E	6.46		
	S 33 1/2° W	5.50	N 21 1/2° W	5.62	S 64 1/2° E	3.45		
4.					S 34 1/2° E	7.09		
	N 66 1/2° W	11.00	N 56° W	12.08	S 31 1/2° E	5.38		
	S 73 1/2° W	14.00	N 26 1/2° W	7.00	S 76° E	4.00		
	N 68 1/2° W	20.50	N 11° W	7.03	N 77 1/2° E	12.53		
	N 24° W	9.04	N 10° E	7.89	S 70 1/2° E	8.54		
	N 42 1/2° W	8.50	N 28 1/2° E	3.43	S 53 1/2° E	2.90		
	W. St.	3.50	N 39 1/2° E	3.56	N 88° E	1.66		
	N 37 1/2° W	18.00	N 32° E	4.61				
	N 66° W	9.50						
	N 77° W	7.25						
5.								
	N 86° W	10.00	N 42° E	15.79	N 30 1/2° E	3.96		
	S 51 1/2° W	10.00	N 57 1/2° E	4.56	N 63 1/2° E	10.20		
	S 36 1/2° W	13.00	N 13 1/2° E	11.48	N 75° E	2.65		
	S 29° W	13.00	N 54 1/2° E	6.76	N 87 1/2° E	2.64		
	S 55 1/2° W	25.50	N 57 1/2° E	13.95	N 69 1/2° E	10.37		
	S 44 1/2° W	16.50	N 53 1/2° E	13.16	N 66° E	3.99		
	S 34 1/2° W	10.50	N 70 1/2° E	6.62	S 71° E	1.66		
	S 24 1/2° W	4.48			N 46 1/2° E	22.42		
	South	2.50			N 44° E	9.41		
					N 65° E	7.65		
					N 50° E	3.00		
					N 65° E	5.02		
6.								
	S 29° W	6.08	N 60 1/2° E	5.55	N 2 1/2° E	5.23		
	S 68 1/2° W	19.50	N 88° E	8.85	N 9° W	7.36		
			N 63 1/2° E	6.04	N 24° W	10.29		
			N 75 1/2° E	5.50	N 63 1/2° W	18.68		
			N 79° E	7.66	N 5 1/2° E	5.38		
			N 70 1/2° E	6.56	N 33 1/2° E	6.64		
			S 8° E	3.13	N 60° E	2.15		
			N 87 1/2° W	3.48	N 68 1/2° E	8.46		
			N 76° W	14.00	N 61 1/2° E	7.76		
			S 65° W	14.67	N 66 1/2° E	9.57		
			S 33° W	8.00	N 53 1/2° E	1.97		
8.								
	S 39° W	16.00	N 77 1/2° E	2.86	S 71° E	6.91		
	S 69° W	14.00	N 61 1/2° E	4.75	S 87 1/2° E	7.31		
	S 59° W	13.62	N 47° E	5.48	N 86 1/2° E	11.79		
	S 45 1/2° W	6.33	N 30° E	4.77	N 81 1/2° E	5.10		
	S 45 1/2° W	15.50	N 30° W	4.39	N 78° E	10.79		
	S 42° W	12.50			S 83° E	6.75		
	S 23 1/2° W	17.00			N 86° E	9.94		
					S 72° E	8.59		
					N 88 1/2° E	14.68		
9.								
	S 72° E	7.50						
	S 77 1/2° E	13.50						
	S 35° E	4.00						
	S 38° E	16.50						
	S 15° E	25.00						
	S 77 1/2° E	8.00						
	S 26° E	4.50						
10.								

Memo 147 35 R

Total number of Acres 29,271.33

Scale 40 ch<sup>s</sup> to an Inch.

Surveys designated by whom surveyed	Date of Contract	Amt. of Surveys	When surveyed	When approved
Town Lines	Mullitt & Brinkley	12 <sup>n</sup> 62 <sup>n</sup> 90	3 <sup>d</sup> of 1833	3 <sup>d</sup> of 1834
"	same	9 <sup>n</sup> 72 <sup>n</sup> 28	4 <sup>th</sup> of 1833	2 <sup>d</sup> of 1836
Subdivision	Gen. W. Harrison	35 <sup>n</sup> 49 <sup>n</sup> 75	1 <sup>st</sup> of 1834	3 <sup>d</sup> of 1834
"	Wiram Burnham	44 <sup>n</sup> 57 <sup>n</sup> 73	3 <sup>d</sup> of 1836	1 <sup>st</sup> of 1837

The above Map, of Townships N<sup>o</sup> 4 — of Range N<sup>o</sup> 12 E. of the 4<sup>th</sup> Principal Meridian, Wisconsin Ter., is strictly conformable to the field notes of the Survey thereof on file in this Office, which have been examined & approved.  
 Surveyor General's Office, *Robert J. Taylor* Secy



Township N<sup>o</sup> 4 N, Range N<sup>o</sup> 12 E, 4<sup>th</sup> Mer.

WISCONSIN



Meanders of Rock River

Posts	Courses	Ch <sup>2</sup> Lk <sup>2</sup>	Posts	Courses	Ch <sup>2</sup> Lk <sup>2</sup>	Posts	Courses	Ch <sup>2</sup> Lk <sup>2</sup>
9.	S23 1/2 N	7.00						
	N 7 1/2 E	7.50						
	N 17 1/2 E	13.50						
	S25 1/2 E	4.00						
	S58 1/2 E	16.50						
	S15 1/2 E	25.00						
	S17 1/2 E	8.00						
10.	S26 1/2 E	4.50						
	S35 1/2 E	11.50						
	S37 1/2 E	10.50						
	S 1 1/2 E	40.00						
	S20 1/2 E	5.00						
	S27 1/2 E	13.25						
1.	N88 1/2 W	11.50						
	N83 1/2 W	7.50						
	N80 1/2 W	12.50						
	N85 1/2 W	13.50						
	N70 1/2 W	6.00						
2.	N66 1/2 W	11.50						
	S66 1/2 W	14.50						
	S59 1/2 W	19.00						
	S62 1/2 W	12.50						
	S8 1/2 W	6.50						
	S 6 E	11.00						
	N07 1/2 E	14.50						
	S67 1/2 E	13.00						
3.	N10 1/2 W	17.50						
	S26 1/2 W	16.50						
	S64 1/2 W	24.50						
	S71 1/2 W	5.50						
4.	N63 1/2 W	5.50						
	N66 1/2 W	11.50						
	S71 1/2 W	14.50						
	N68 1/2 W	20.50						
	N24 1/2 W	7.00						
	N42 1/2 W	8.50						
	West	3.50						
	N32 1/2 W	18.00						
	N60 1/2 W	7.50						
5.	N17 1/2 W	7.25						
	N86 1/2 W	10.00						
	S51 1/2 W	10.00						
	S36 1/2 W	13.00						
	S30 1/2 W	13.00						
	S33 1/2 W	25.50						
	S44 1/2 W	16.50						
	S31 1/2 W	10.50						
	S71 1/2 W	4.48						
6.	South	2.50						
	S57 1/2 W	6.00						
7.	S67 1/2 W	17.50						
	S80 1/2 W	14.50						
	S75 1/2 W	7.00						
	S64 1/2 W	6.50						
	N57 1/2 W	6.00						
	S76 1/2 W	19.00						
	S68 1/2 W	14.67						
8.	S83 1/2 W	8.00						
	S57 1/2 W	16.00						
	S16 1/2 W	14.00						
	S57 1/2 W	13.62						
	S65 1/2 W	6.33						
	S45 1/2 W	15.50						
	S42 1/2 W	10.50						

V. H 3572

Total number of Acres 4764.22

Survey Designated	By Whom Surveyed	Date of Contract	Amount of Survey	When Surveyed	When p <sup>d</sup> for and ch <sup>d</sup> in the Sur. Gen <sup>l</sup> acc <sup>t</sup>
Subdivision.	Geo. W. Hamilton	18 <sup>th</sup> Nov. 1833.	M. Ch <sup>s</sup> Lk <sup>s</sup> 35.47.75	1 <sup>st</sup> 9 <sup>th</sup> 1834.	5 <sup>th</sup> 9 <sup>th</sup> 1834.
Township lines.	Hunter & Brin	9 <sup>th</sup> July 1833	12.02.90	3 <sup>rd</sup> 9 <sup>th</sup> 1833	5 <sup>th</sup> 9 <sup>th</sup> 1834

The above Map of Township N<sup>o</sup> 4 of Range N<sup>o</sup> 12 East of 6<sup>th</sup> Principal Meridian (N.W. Cor.) is strictly conformable to the field notes of the survey thereof on file in this Office, which have been examined and approved.

Surveyor General's Office,  
Cincinnati, July 21<sup>st</sup> 1835. *Robt. L. Lathrop, Genl.*